

Be our guest

design

quality

experience

VISMA contract
HOTEL & RESIDENTIAL FURNITURE

Welcome to **VISMA**contract
HOTEL & RESIDENTIAL FURNITURE
the key to successful projects

WHO WE ARE

Visma Contract is an Italian company based in Sarcedo (near Venice) and belongs to the Visma group, which has over 40 years' experience in manufacturing modern furniture for hotels and apartments. The group has a showroom of 8,000 square meters in Italy, divided into production and exhibition areas of kitchens, residential and hotel room furniture.



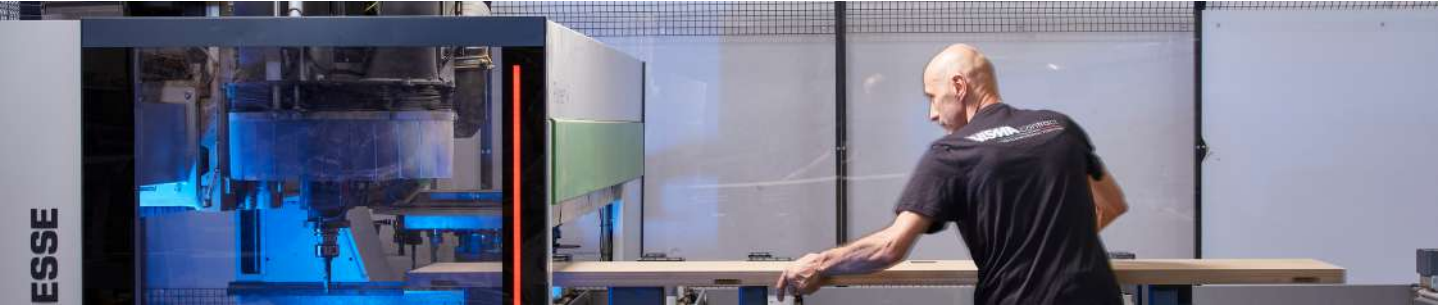
OUR MISSION

is to create long-term value for our customers through reliability, flexibility, integrity and timeliness. We want every experience with Visma Contract furniture to be a warm, comfortable and worry-free one through mutual respect and trust.

OUR VISION

is to become one of the leading hotel and residential furniture manufacturers, offering unmatched quality, design and long-lasting furniture, completely made in Italy. Our goal is to become our clients' main partner, sharing their vision and a common path to the success of any project we realize.

100 %
made in Italy



We are present in...



For full references list visit our website www.vismacontract.com



OUR SERVICES

- INTERIOR DESIGN RESEARCH AND PROJECT
- FREE RESTYLING CONSULTATION
- TAILORING 100% MADE IN ITALY
- IN-HOUSE PRODUCTION
- MOCK UP REALIZATION
- TURN-KEY SERVICE

PROJECT MANAGEMENT

- . project assessment
- . production | financing
- . logistics | complete fit out installation
- . after sales assistance



OUR WORKING ROAD MAP

1 Request from Client & Architect



2 Information requested by Visma Contract:

- . Technical Drawings (DWG-CAD)
- . Bill of quantity (BOQ)
- . Budget



3 Visma Contract will develop a quotation and presentation including:

- . Furniture Layout
- . Concept design
- . Material and finishes



4 Client / Architect quotation approval and contract



5 . Survey
 . Development of rendering
 . Shop drawings
 . Production time frame
 . Mock up at Visma headquarter



6 . Production
 . Packaging and labelling
 . Quality control



7 Logistic

- . SGS inspection
- . Shipment
- . Custom clearance
- . Distribution and goods lifting
- . Installation
- . Final testing



FLOOR	APT.no	PACKAGE
03	314	C2 DINING CHAIR
CUSTOMER ----		
PROJECT ----		

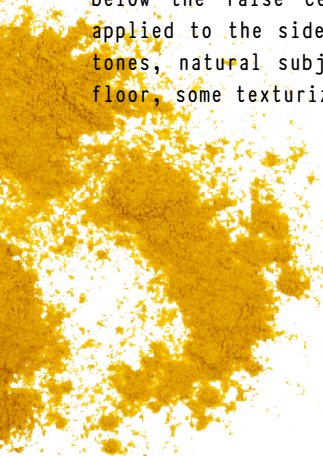
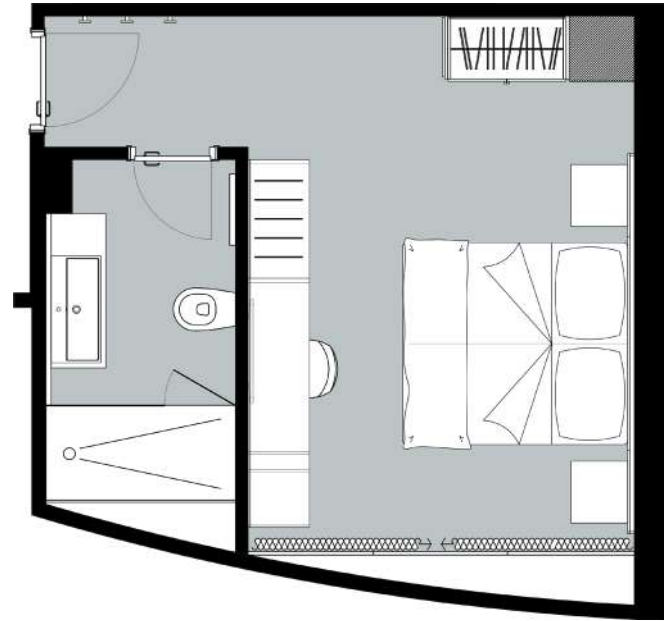




Index

01 / Curry.....	09
02 / Vanilla.....	11
03 / Juniper.....	13
04 / Saffron.....	15
05 / Licorice.....	17
06 / Cinnamon.....	19
07 / Paprika.....	21
08 / Pepper.....	23
PROJECTS / Luxury Hotels.....	25
PROJECTS / Lounge & Restaurants.....	27
PROJECTS / Residential Apartments.....	29
PROJECTS / Luxury ApartHotels.....	31

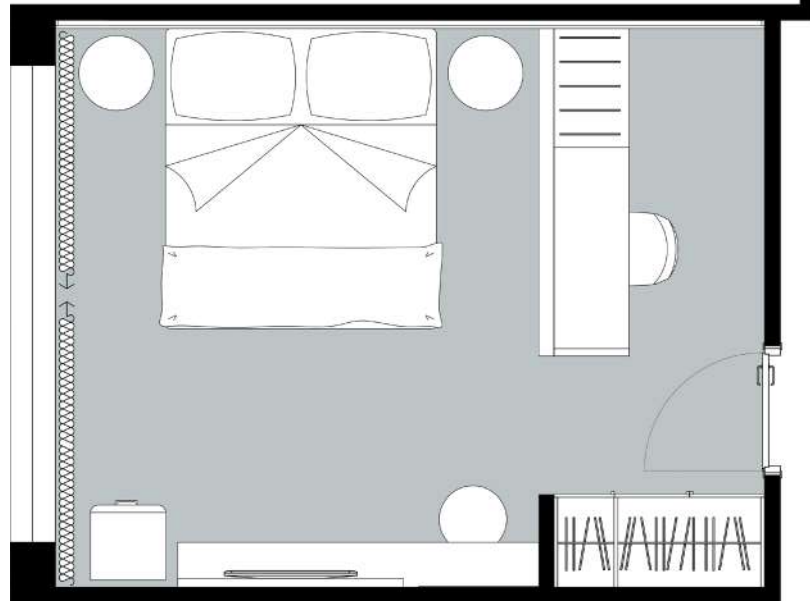
The character of this modern room is dictated by the confident finishing touch and contrasting tones of textiles and upholstery. The high headboard is made up of four panels, two side panels with wood finishing and two central panels covered with a padded fabric. The bed is made up of twin bed frames. The bedside tables, the desk with a minibar and the luggage rack are solid and very thick. The wardrobe with two hinged doors ends just below the false ceiling and has a mirror applied to the side. Wallpaper with neutral tones, natural subject. Wood-effect slatted floor, some texturized, in shades of grey.



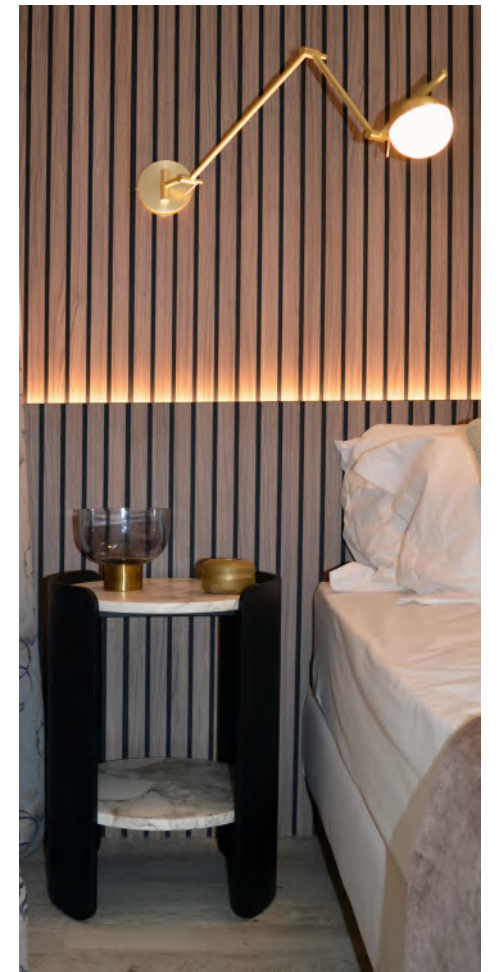
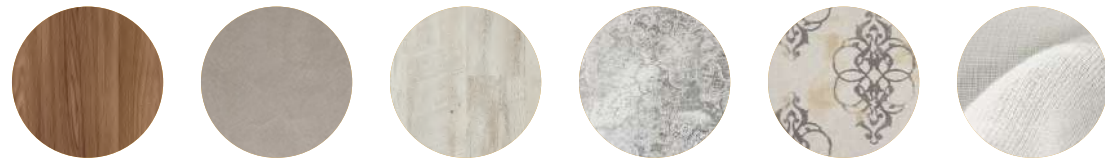
MATERIAL MOOD



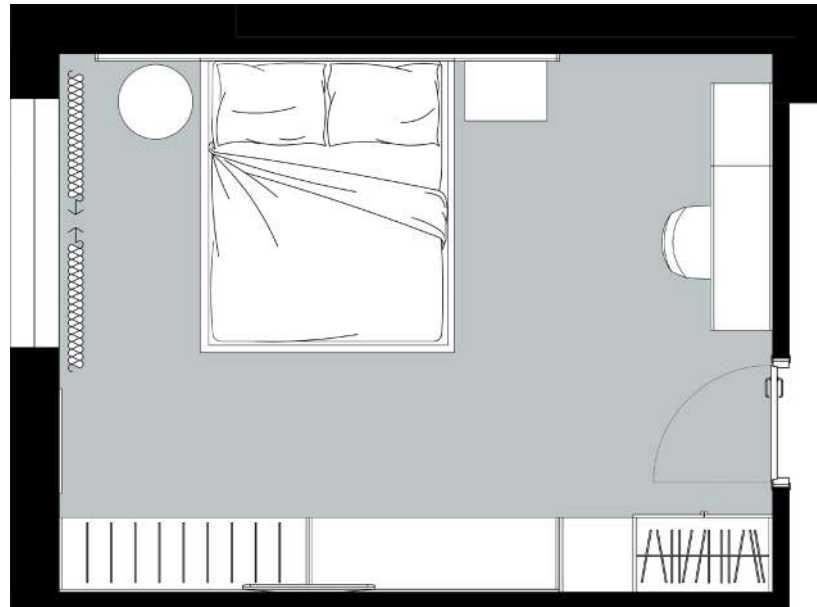
Modern room with a refined look. Large slatted wall paneling combined with smooth solid-colored furnishing elements convey a strong and elegant character, accentuated by the current gold-colored finishes of the furnishing accessories. Interesting solution in the arrangement of desks and luggage rack. Full-height channeled TV panel and thick shelf that serves as a vanity and as a surface for placing objects. Glossy lacquered free-standing minibar cabinet that perfectly matches the chic and sophisticated lace-effect wallpaper. Three-door wardrobe in stop-sol glass with titanium metal frame.



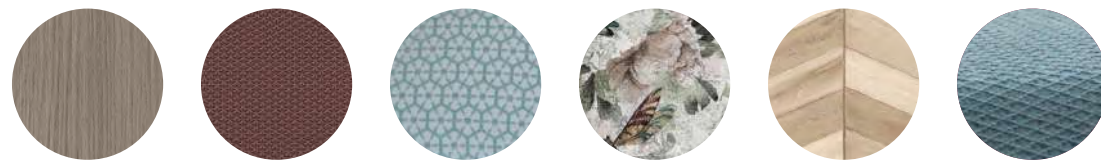
MATERIAL MOOD



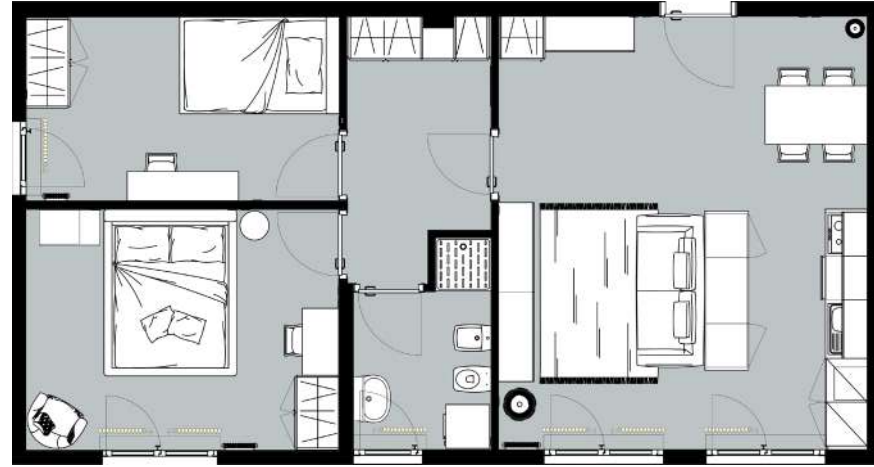
A room with a young and modern spirit, enhanced by the rich wallpaper behind a simple and linear headboard. Wood finish on the grey tone of the side panels of the headboard, the bed frame, the bedside tables, the two-door wardrobe with an open compartment for the minibar and safe, and the desk; drawer fronts decorated with a special 3D dye texture. A comfortable padded bench supported by a metal structure with anthracite finish and a suitcase holder with a practical shoe compartment continue the wall of the wardrobe, resting on the mural background with must-coloured. Wood effect floor with various shades; fishbone laying.



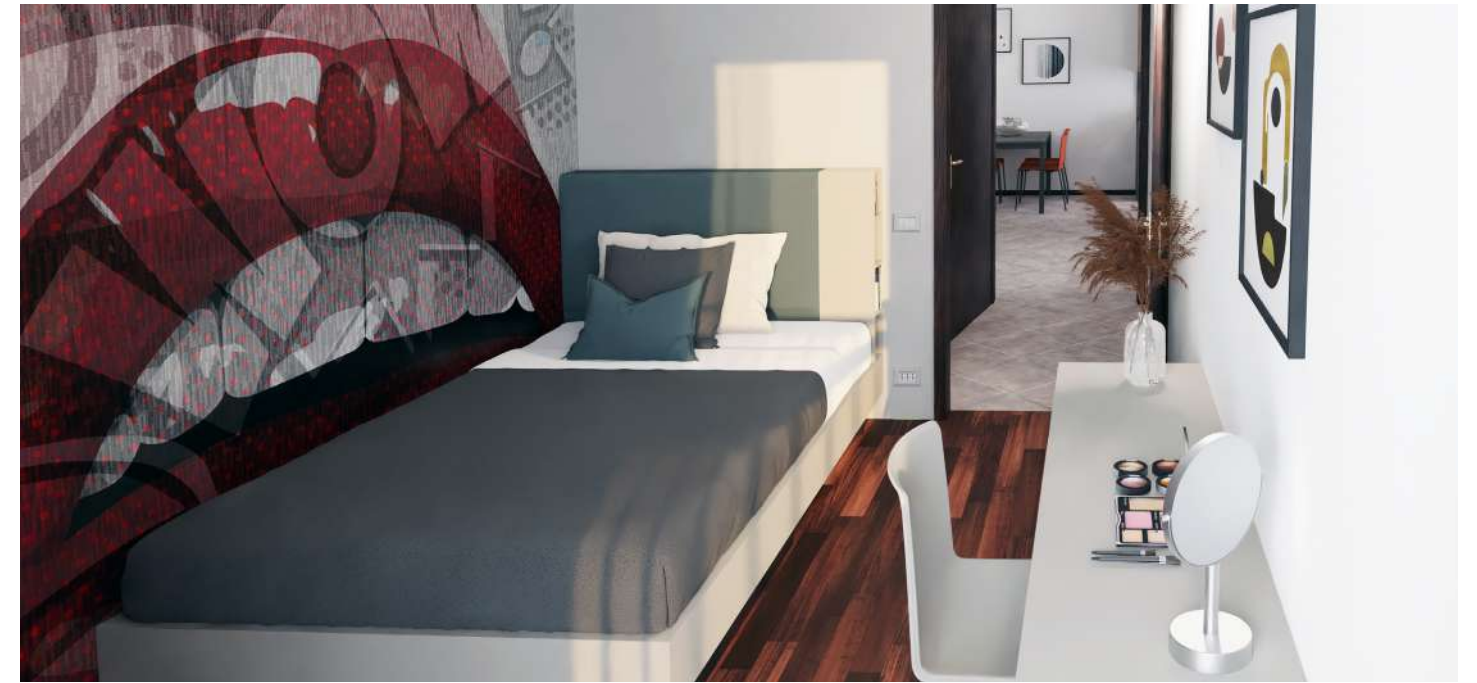
MATERIAL MOOD



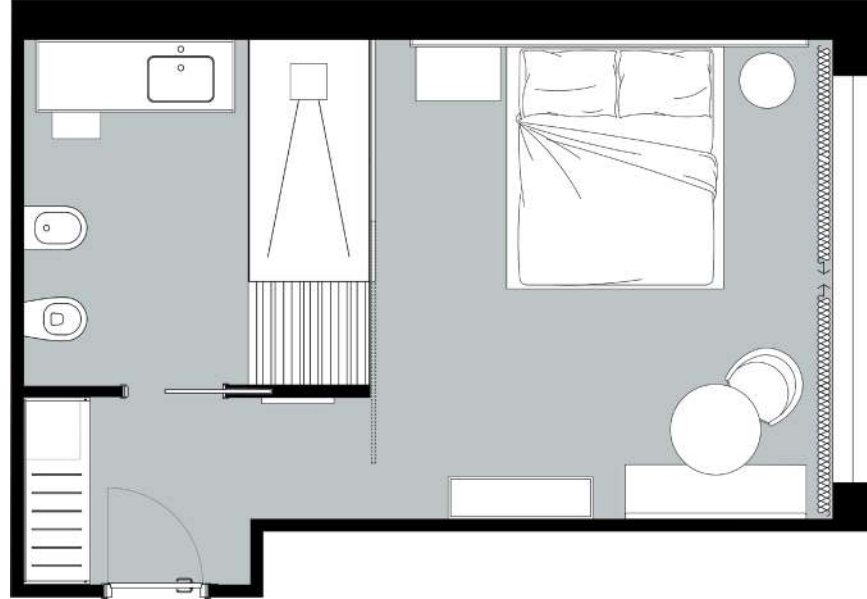
Large two-bedroom apartment with open-plan kitchen and living room. Basic furniture inserted within environments enriched with wallpapers that are the protagonists. Ideal solution for apartments to rent also for medium-long term stays, designed for a young and dynamic target.



MATERIAL MOOD



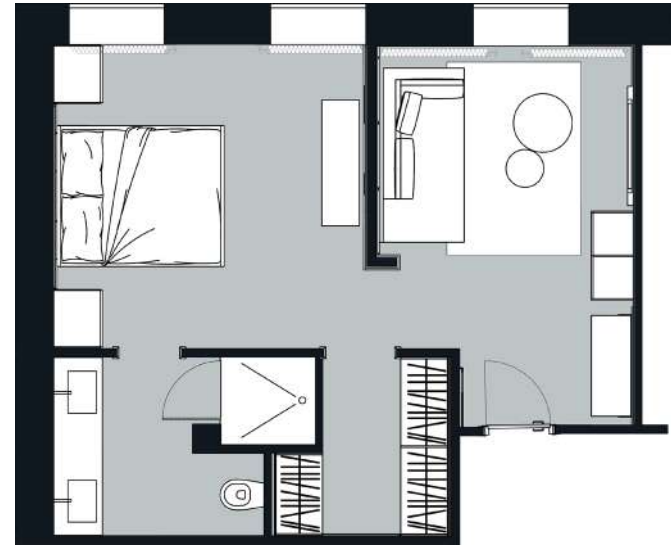
A spacious room in which the large shower area is the undisputed star. An exposed bathroom with wallpaper running through the spaces. Natural oak and black metal interact in the furnishing. An open wardrobe set in the entrance niche with a teal backdrop, the same colour as that of the bedside table and other furniture accessories. The headboard panel is characterized by the intersection of the veins of the oak, while maintaining a linear and simple appearance. In front of the bed, the round table serves as a desk and breakfast table, combined with a comfortable armchair and bench with a padded back. Bathroom cabinet with a metal vanity area featuring a technical top, served with a stool with upholstered seat.



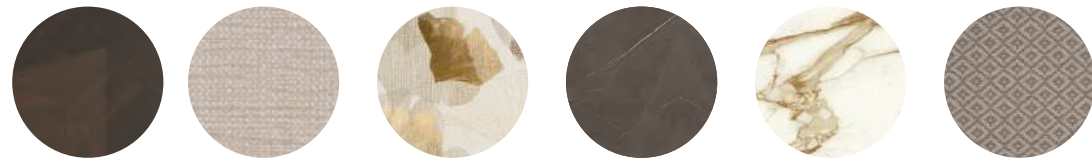
MATERIAL MOOD



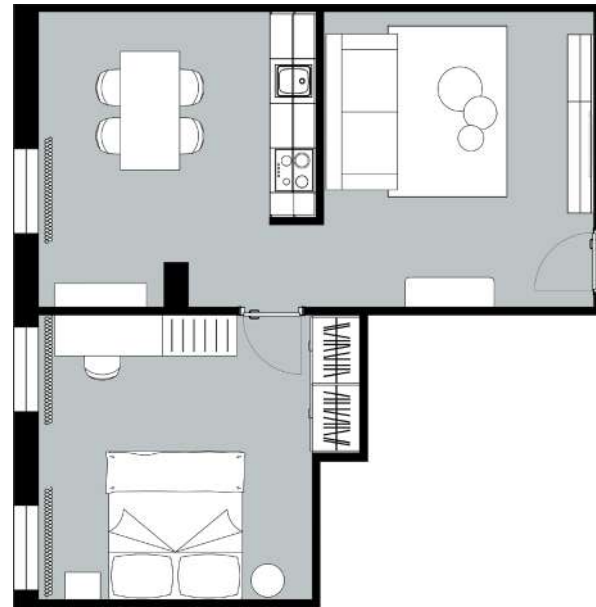
Luxury suite characterized by full-height panelling: The living area is distinguished by wood panelling and wallpaper in dark colors. Minibar cabinet with gold inserts that lend modernity and elegance to the room. Iconic headboard panel with lightly textured upholstery and veneered, cross-weave panelling that creates a kaleidoscopic effect. Bedside tables with top in a marble-effect ceramic. Wall panelling in Botticino marble and top with integrated bathtubs in gold Calacatta marble.



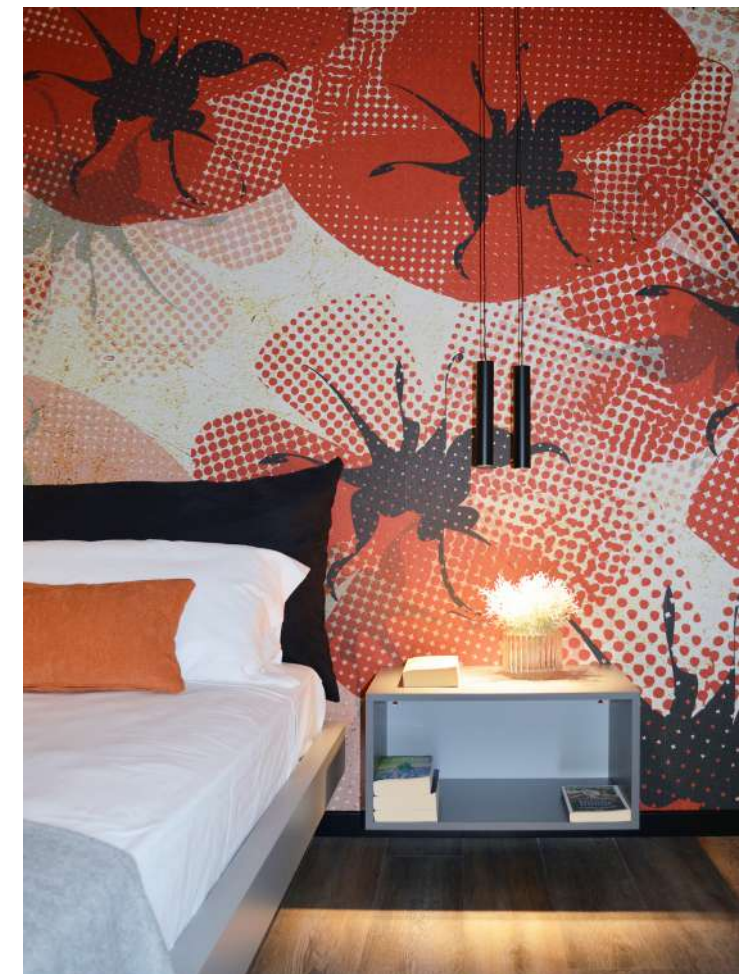
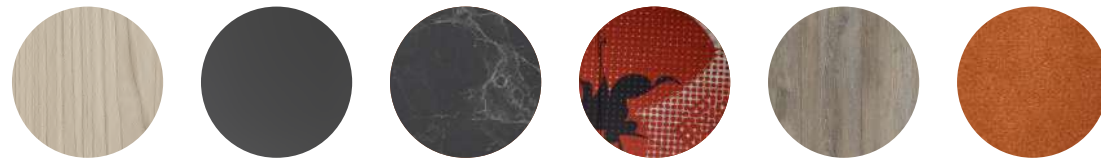
MATERIAL MOOD



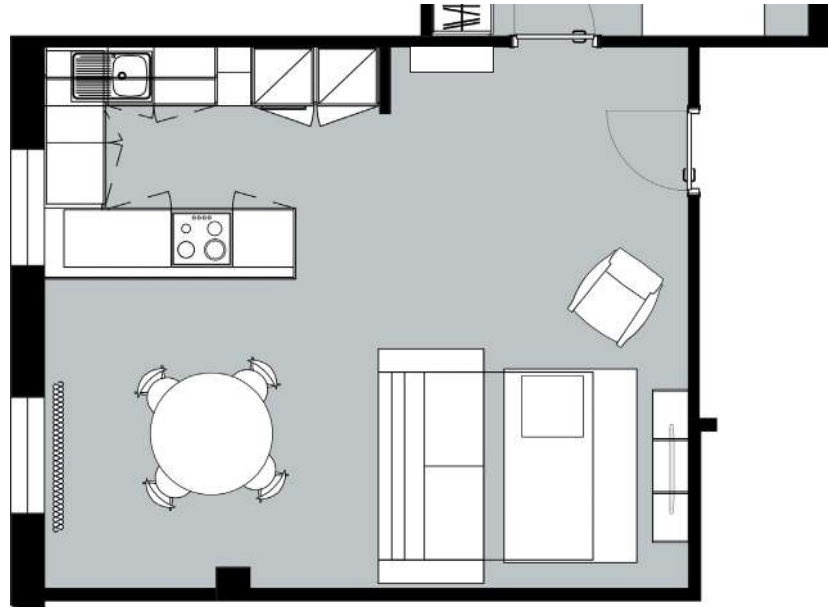
A single bedroom apartment. A living room with vintage leather sofa, lamp with black wooden tripod, decorative orange pillows that remind to the dining chairs. Precious TV unit with repositionable metal frame and shelves, grey flap doors and a base with wood finish and fresh relaxing tones. The same textures are reproduced in the kitchen that combines metal inserts such as plinths and handles at the burnished metal table. The full-wall behind the headboard has flowers patterns with pop art style. Double color wardrobe with strong thickness handle.



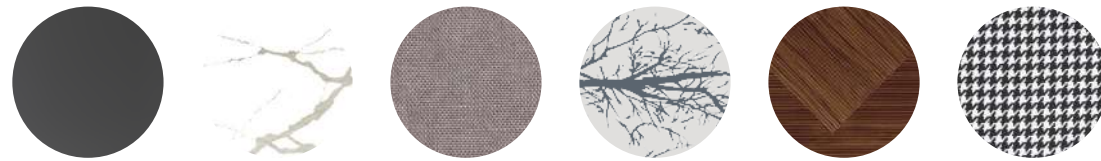
MATERIAL MOOD



A suitable solution for a large and modern open space dedicated to the living area. Minimal entrance, composed of a suspended drawer, a mirror and a design lamp. A large kitchen with peninsula, dark grey scratch-resistant doors and white Carrara marble top. Iconic table for the dining area, accompanied by black chairs with a metal structure, which lend a Vintage touch to the setting. A living room with a practical convertible sofa covered with stain-resistant fabric, which provides 2 additional beds. Wallpaper with a play of positive and negative effects between the room and the living room.



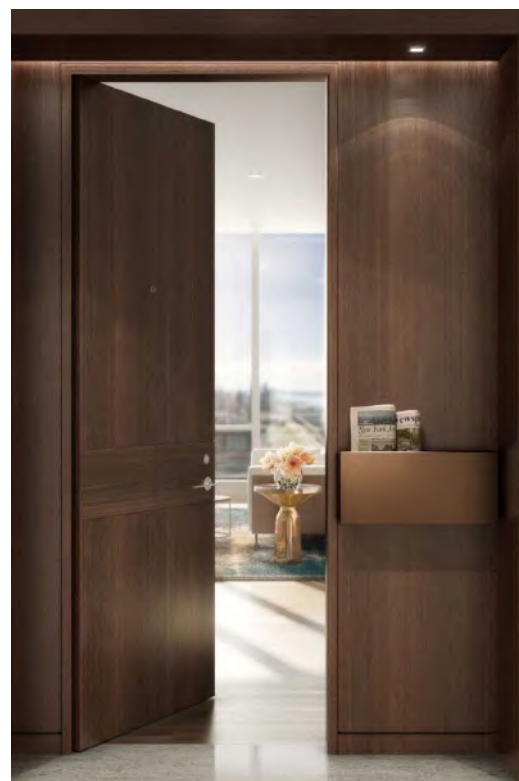
MATERIAL MOOD



Luxury Hotel located in Middle East Africa. Guests can enjoy a relaxing stay within walking distance of the city centre amenities. The rooms offer all the comforts and services of a 4-star superior hotel.

A perfect combination of Italian-made furnishings and the international concept of the Marriott Hotel.

The iconic portal framing the window, boiserie and full-height headboards are the crowning glory of this king room. The materials used have texture and warm tones that match the landscape and the mild local climate.



Renowned Japanese restaurant in the heart of Kwait. The location attracts a young clientele looking for new culinary experiences. Authentic Japanese tradition embraces modern style to produce a sophisticated, elegant design. The décor exudes Italian craftsmanship. Materials and colors imbue guests with the spirit of oriental culture.



The residential structure has a strategic position and represents an ideal solution for those who must stay in the capital for medium-long periods, for reasons of work or pleasure.

The apartments, with a modern design, have been furnished to be functional and equipped with all the necessary comforts. The total white look kitchen integrates well with the living area where the Canaletto walnut finish is combined with grey textiles. There were two layouts proposed for the living area: one with a fixed sofa and one with a convertible sofa. The room is characterized by a padded headboard upholstered with leather-effect eco-leather which, combined with round metal bedside tables and a wooden writing desk, give a Vintage touch to the setting. The all white sliding wardrobe in the niche is a handy solution.



The Towers provide a privileged lifestyle combining convenient location with the luxurious comfort of its stunning finishing and signature amenities.

All units feature flawless kitchens with stone bench-tops, splash-backs and integrated European appliances for a modern, streamlined look.

A wave of comfort is making its mark with a touch of sea breeze and prime location across the street from a landmark, the Central Mall. For premium quality lifestyle that blends excitement, elegance and serenity with its unique and dynamic architecture, the Towers will definitely pave its way to be the next iconic residential building.

While searching for a new, fine and premium lifestyle, the Tower engages to provide a modern lifestyle that serves as a nesting place for both city and business life. It is set to be the next iconic landmark which gives nothing but excitement and pleasure.

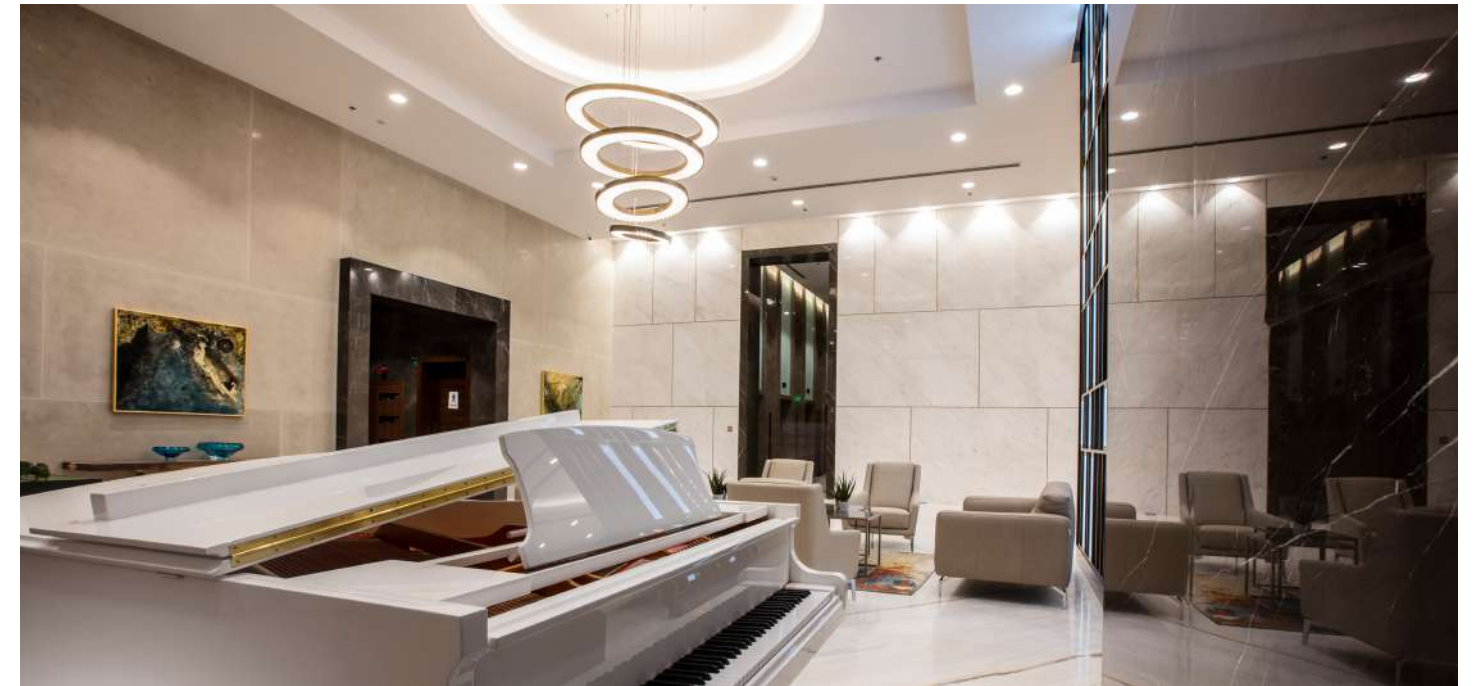
The two towers comprise of a total of 560 units. The east tower having 310 units and the west tower having 250 units, with 36 floors and 34 floors respectively, built on 6500 square meters.

With different size options that varies from studio style, one, two or three bedroom apartments, both towers offer the most practical floor plan that perfectly suits one's needs.

With a solid reputation for quality, the building is home-designed for those who seek pristine-quality with its full-high glass doors that extend the spaces designed to blend comfort and luxury with a perfect city view or a relaxing sea view.



The public areas of representation are the business card for the visitor who enters the imposing Towers for the first time. Luxurious materials, refined finishes, textiles and decorative accessories with attention to the smallest details make the user experience a visual and tactile experience in the pursuit of luxury and comfort.







VISMA contract
HOTEL & RESIDENTIAL FURNITURE

Via Asiago 34 Int. 1
36030 Sarcedo (VI)- Italy
ph. +39 0445560343
contract@vismarredo.net

www.vismacontract.com