

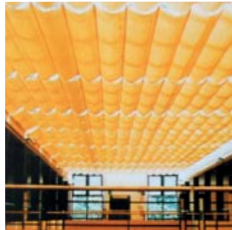
**abba**

**1978-2018**

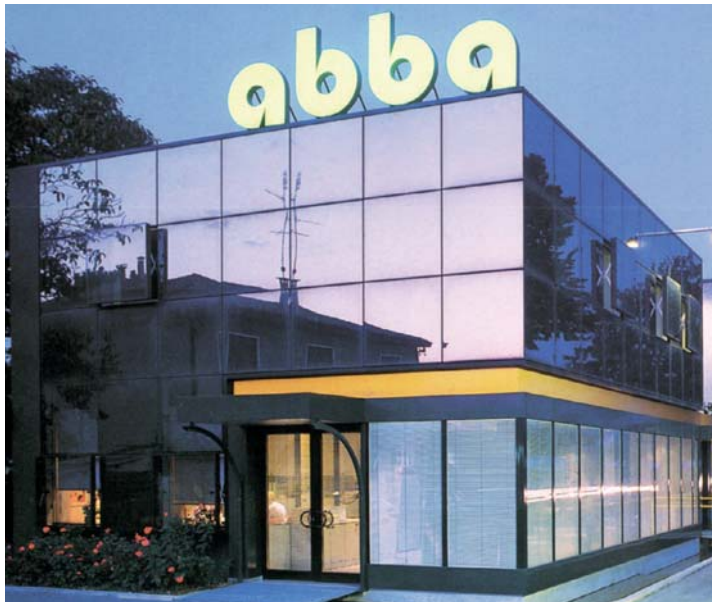








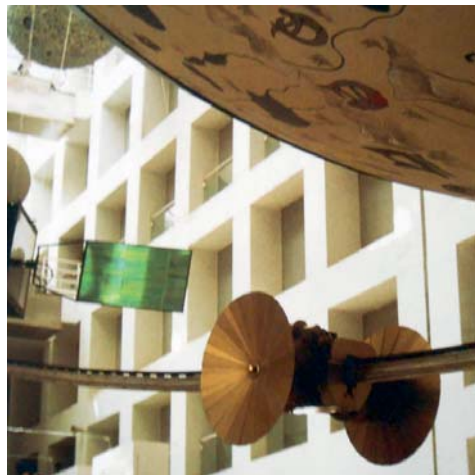
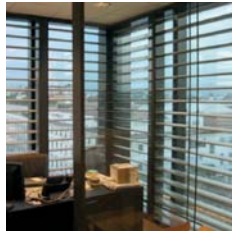
## FROM 1978...



First company headquarters, Castrette, Treviso, 1980

Abba Protezioni Solari è una qualificata azienda trevigiana, con sede a Maserada sul Piave. È specializzata nel settore dei tendaggi tecnici intesi come sinonimo di protezione solare, rifinitura artigianale, attenzione ai minimi dettagli, resistenza e funzionalità. La cura dei prodotti, affiancata a un'immagine tradizionale e avveniristica allo stesso tempo, fanno di Abba un'azienda leader nel settore la cui mission è creare soluzioni personalizzate caratterizzate da un alto livello tecnico e da un design rigoroso ed espressivo. Abba si pone così a fianco dei progettisti di tutto il mondo per affrontare le sfide dell'architettura del futuro.

*Abba Protezioni Solari is a qualified company based in Maserada sul Piave, Treviso. The company is specialized in the production of technical blinds, intended as a synonym of sun protection, hand-crafted finishing, closure, detail care, strength and functionality. The craftsmanship of the products, combined with a traditional and futuristic vision at the same time, makes Abba a leading company in its sector. Its mission is to create customized solutions, that are characterized by a high technical level and an expressive design. In this way, Abba helps the designers to face the future architecture challenges all over the world.*

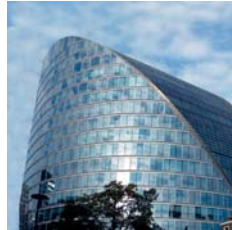


...TO 2018



Company headquarters since 2001, Maserada sul Piave, Treviso

**abba**



**1978**  
**2018**

Abba Protezioni Solari nasce nel 1978 dalla passione del titolare Adriano Torresan che, con la fantasia e la capacità di osservazione del giovane imprenditore, ha costruito un'azienda oggi leader mondiale nel settore dei tendaggi tecnici.

Dopo gli studi in disegno tecnico, Adriano Torresan avvia una prima azienda a Villorba, specializzata nel settore dei tendaggi meccanici. La passione per la progettazione e la convinzione di Adriano che nulla sia impossibile da realizzare, fanno crescere l'azienda che si sposta da prima a Castrette e, dal 2001, nella nuova sede di Maserada sul Piave. Oggi l'azienda è guidata dalla famiglia Torresan: Adriano, la moglie Nadia, le due figlie Federica e Alice, che con passione realizzano tende e coperture tecniche per alcuni tra i più importanti edifici al mondo.

Dalle prime commesse realizzate da Adriano Torresan fino ai più recenti lavori a livello internazionale, Abba si è caratterizzata per la capacità di gestire progetti speciali e su misura. Con alle spalle quarant'anni di attività, i tecnici di Abba, coordinati dall'esperienza di Adriano Torresan, progettano e sviluppano nello stabilimento di Maserada sul Piave, prototipi in scala reale di sistemi su misura per tendaggi e schermature solari.

Negli anni, l'aumento della produzione e l'esigenza di collaborare allo sviluppo dei progetti per le svettanti e sinuose architetture contemporanee, hanno reso necessario sviluppare uno spazio più adatto alla crescita dell'azienda introducendo attrezzature di ultima generazione che contribuiscono ad accrescere la capacità tecnica, l'innovazione e la qualità dei prodotti di Abba, offrendo ai clienti soluzioni sempre all'avanguardia.

Il team di Abba ha sviluppato competenze in grado di fornire supporto ai progettisti in tutto il mondo, garantendo un'elevata professionalità in tutte le fasi di progettazione e produzione dei sistemi di oscuramento e protezione solare, rispondendo così alle esigenze dell'architettura contemporanea.

*Abba Protezioni Solari was founded in 1978 by the owner Adriano Torresan. With the imagination and the ability of observation, the young entrepreneur has built a leading company in the field of technical blinds.*

*After studying technical drawing, Adriano Torresan started in Villorba a first company, which is specialized in the mechanical curtains sector. The passion for the design and the Adriano's idea that nothing is impossible to achieve, made the company grow up. It moved first to Castrette and, since 2001, in the new headquarters of Maserada sul Piave. Nowadays the company is run by the Torresan family: Adriano, his wife Nadia, the two daughters Federica and Alice, who passionately create blinds and technical coverings for some of the most important buildings in the world.*

*Starting from the first works carried out by Adriano Torresan up to the most recent international works, Abba is characterized by the ability to manage special and customized projects. With forty years of activity, Abba's technicians, coordinated by the experience of Adriano Torresan, design and develop full-scale prototypes of tailor-made systems for curtains and solar shading.*

*Over the years, the increase of production and the collaboration in the development of projects for the high and sinuous contemporaneous architectures, force Abba to build up a more suited space to the growth of the company. At the same time it introduced the latest generation equipment to increase Abba's technical capacity, innovation and quality, to offer cutting-edge solutions to the customers. The Abba team has developed skills in order to provide support to designers all over the world, ensuring high professionalism in all phases of design and production of shading and sun protection systems, therefore responding to the needs of contemporary architecture.*

40 years

**abba**



**1978**  
**2018**



# innovation

La forza propulsiva di Abba ha come obiettivi la crescita e l'innovazione continua mediante un processo tecnologicamente evoluto. Ponendo l'attenzione su quanto avviene nel nostro pianeta e prendendo in considerazione le idee più innovative nella progettazione dell'ambiente, delle città e delle abitazioni, lo staff di Abba si occupa di ogni fase del processo, dalla progettazione all'installazione. Attraverso sofisticati processi di ingegnerizzazione, nascono certificati prodotti su misura in cui tradizione e innovazione si intrecciano in nuovi modelli. Non solo tende e schermature speciali, con forme personalizzate e adattate allo specifico progetto, ma anche sistemi integrati in cui il fotovoltaico viene applicato ai vetri di facciata.

Pioniera nell'innovazione, Abba si è infatti specializzata anche nella produzione di pannelli fotovoltaici, sviluppando in particolare soluzioni dall'elevata integrabilità a livello architettonico. La sofisticata linea produttiva realizzata dall'azienda consente la produzione sia di pannelli tradizionali in silicio policristallino o monocristallino, che di pannelli vetro-vetro, in cui la produzione di energia si coniuga alla trasparenza e alla schermatura solare. Abba progetta e produce inoltre sistemi che possono essere integrati nelle schermature in alluminio, quali frangisole fissi o orientabili meccanicamente. Le soluzioni proposte da Abba trovano applicazione in molti settori, da quello edilizio fino a quello navale.

Ancora una volta, è la specificità del progetto a richiedere soluzioni su misura in cui la schermatura da dispositivo tecnico diventa soluzione architettonica perfettamente integrata all'edificio coniugando il comfort luminoso alla produzione energetica. La continua attività di ricerca di Abba si concentra su prodotti dal basso impatto ambientale, offrendo soluzioni personalizzate che permettono di rispondere alle rinnovate esigenze del vivere contemporaneo, aprendo nuove frontiere dell'abitare.

*The driving force of Abba aims to a continuous growth and innovation through a technologically advanced process. By focusing on what is happening on our planet and considering the most innovative ideas in the environment, cities and homes' design, Abba's staff takes care of every stage of the process from pattern to installation. Through sophisticated engineering processes, Abba produces tailor-made and certified products in which tradition and innovation are linked together. Not only special curtains and screens, with customized shapes adapted to the specific project, but also integrated systems in which photovoltaic cells are applied to facade glass.*

*Abba is a pioneer in innovation and has specialized its production of photovoltaic panels, developing solutions with a high level of architectural integration. The sophisticated production line created by the company allows the production of both traditional polycrystalline or monocrystalline photovoltaic panels and glass-glass panels, in which energy production is combined with transparency and solar shading. Abba also designs and produces systems that can be integrated into the aluminium shading frames. The solutions proposed by Abba find application in many sectors, from building to naval sector.*

*Once again, the specificity of each project requires customized solutions, in which the solar shading becomes an architectural solution perfectly integrated into the building, combining luminous comfort with energy production. The continuous Abba's research activity focuses on products with a low environmental impact and offers customized solutions that allow to respond to the renewed needs of contemporary living, opening new frontiers of the living dimension.*

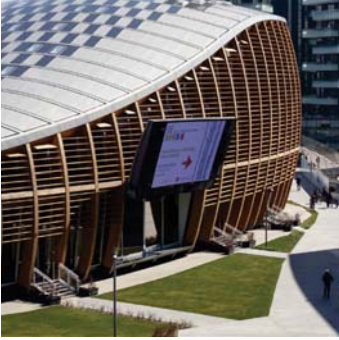
ROLLER BLINDS



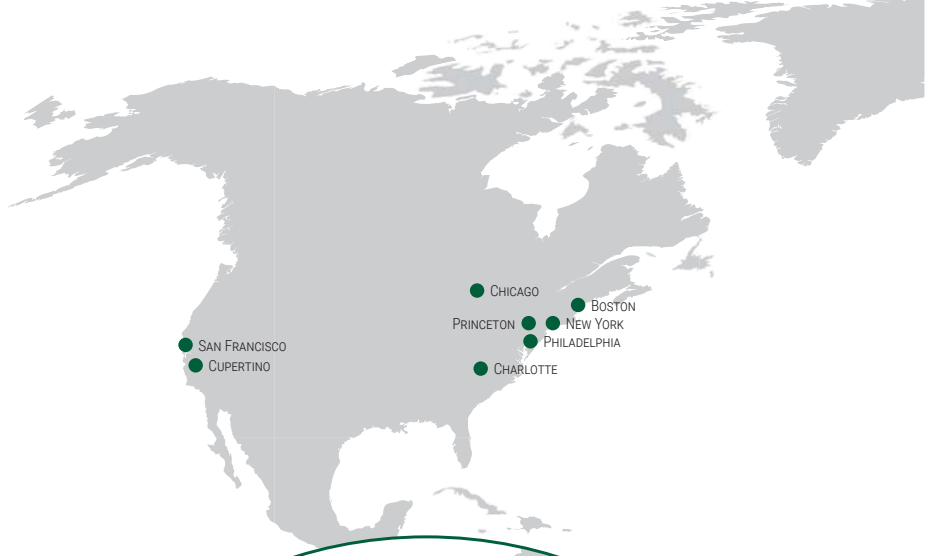
VENETIAN BLINDS

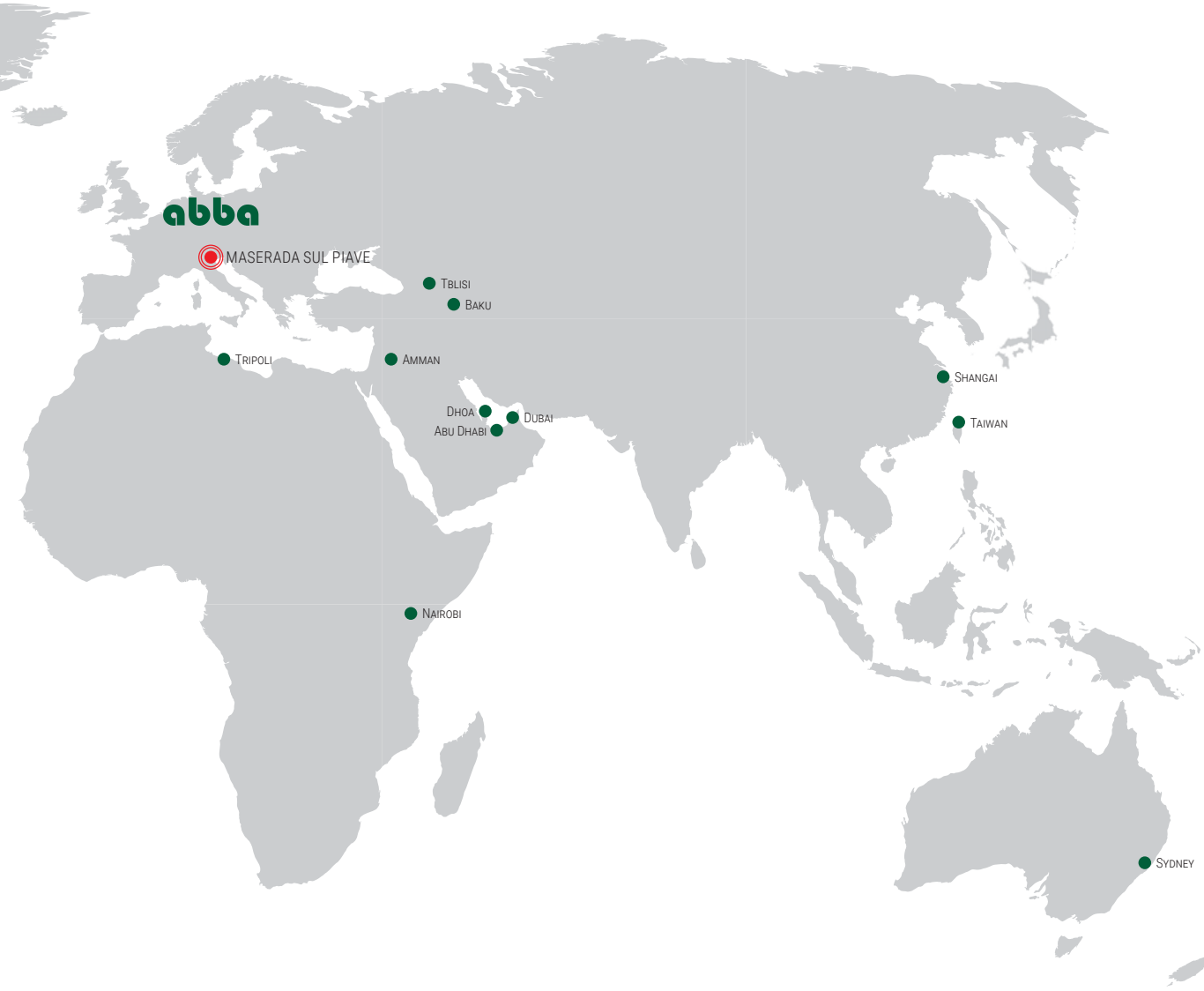


LOUVERS



SPECIAL PROJECTS  
& PHOTOVOLTAIC





**abba**

MASERADA SUL PIAVE

TBLISI

BAKU

TRIPOLI

AMMAN

DHOA

ABU DHABI

DUBAI

SHANGAI

TAIWAN

NAIROBI

SYDNEY

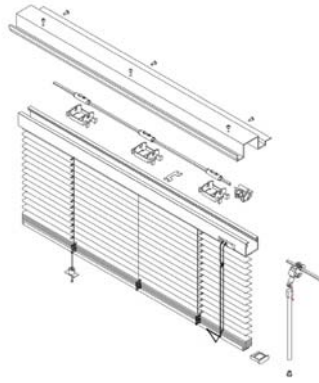
world premiere

# 99 BISHOSPGATE

London, UK  
1994

Project  
Foster&Partners

Blinds type  
Manual operated venetian blinds

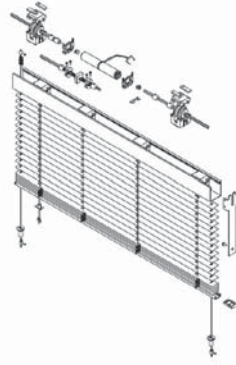




# JIU SHI TOWER

Shanghai, China  
2000

Project  
Foster&Partners  
Blinds type  
Motorized venetian blinds





# DORTMUND LIBRARY

Dortmund, Germany

2000

**Project**

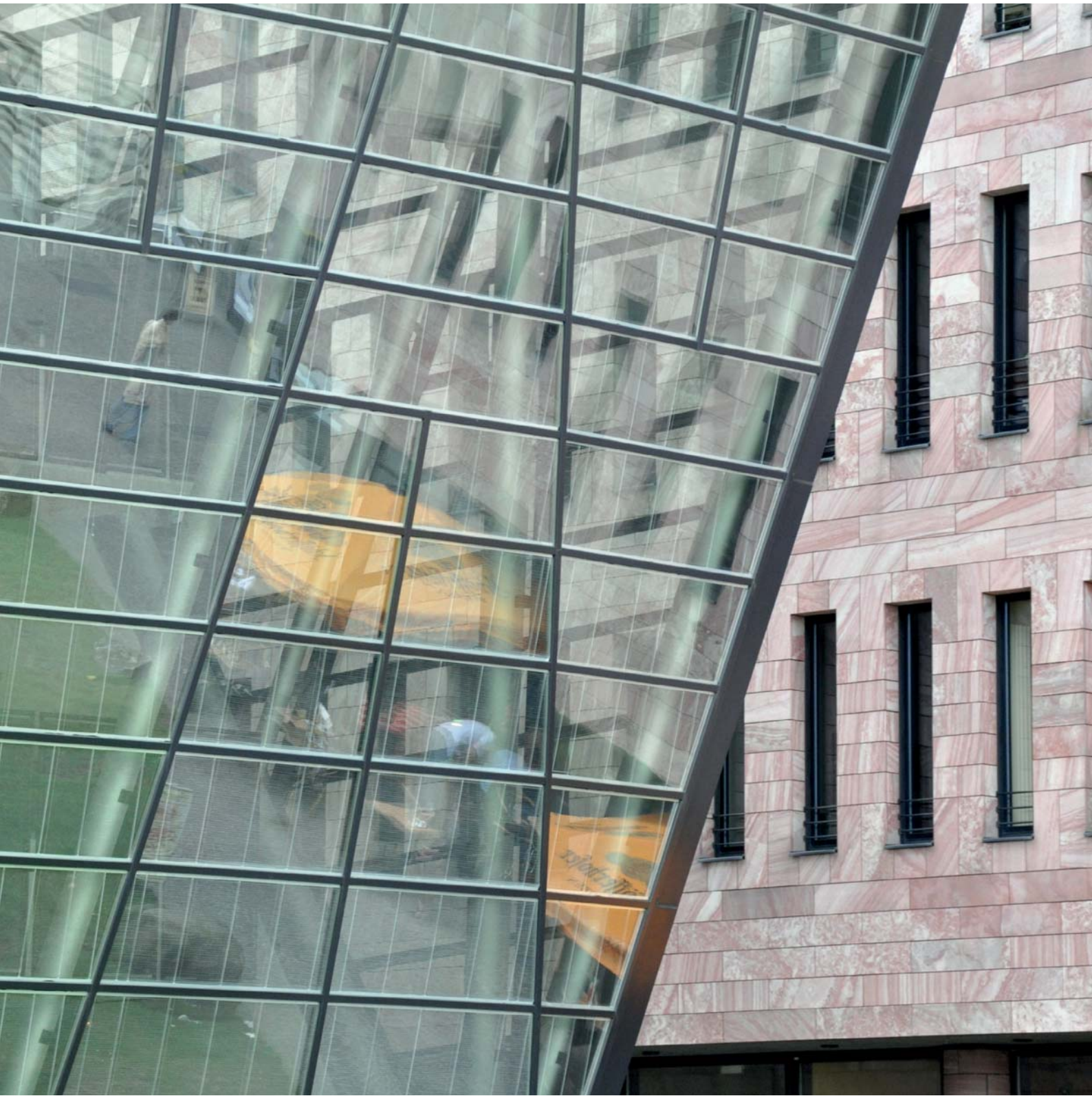
Mario Botta

**Blinds type**

Venetian blinds inside the double glazing







# HSBC HEADQUARTER

London, UK

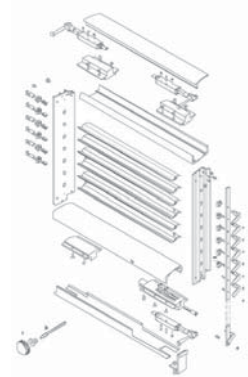
2001

**Project**

Foster&Partners

**Blinds type**

Fixed frames with 50mm shaped slats



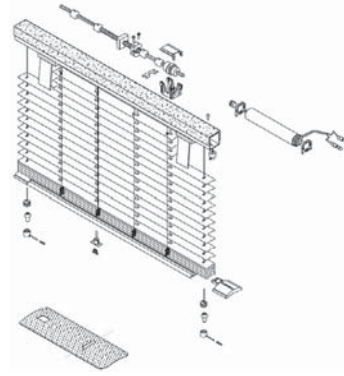
HSBC



# PB-6 PARIS

Paris, France  
2001

Project  
Henry N. Cobb  
Blinds type  
Motorized venetian blinds



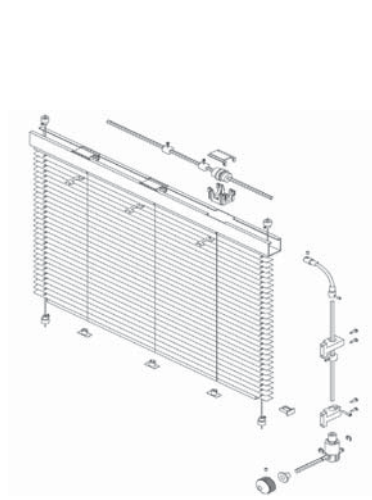


# 30 ST MARY AXE

London, UK  
2002

Project  
Foster&Partners

Blinds type  
Knob-operated venetian blinds



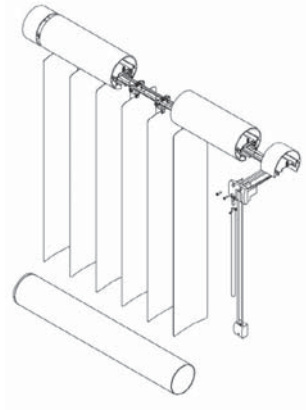


# MANULIFE

Boston, USA  
2002

**Project**  
Skidmore, Owings & Merrill

**Blinds type**  
Vertical adjustable aluminium slats frames



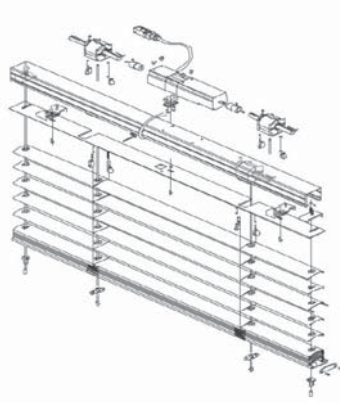




# MOOR HOUSE

London, UK  
2002-2003

**Project**  
Foster&Partners  
**Blinds type**  
Motorized venetian blinds





# BERLAYMONT 2000

Bruxelles, Belgium

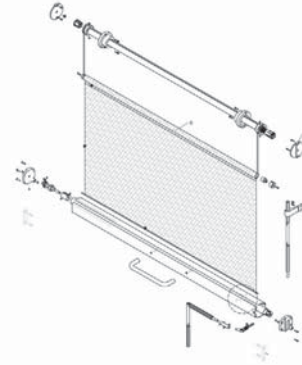
2003

## Project

Lallemand, Beckers, Van Campenhout

## Blinds type

Manual roller blinds



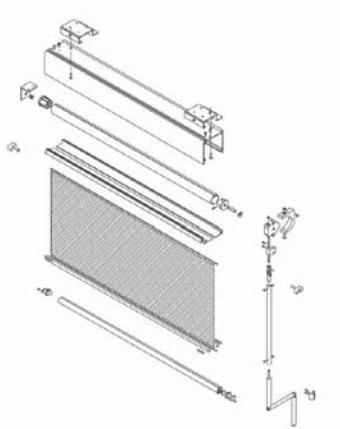


# HEARST TOWER

New York, USA  
2003

**Project**  
Foster&Partners

**Blinds type**  
Manual and motorized roller blinds

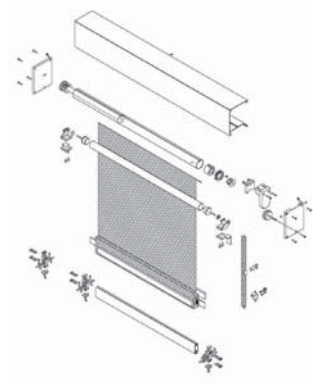




# MORE LONDON 1+6

London, UK  
2003-2005

Project  
Foster&Partners  
Blinds type  
Roller blinds





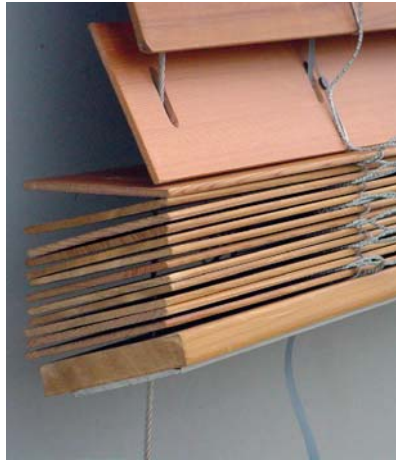


# RIVERSIDE ONE

Dublin, Eire  
2005

Project  
Scott Tallon Walker

Blinds type  
Timber venetian blinds



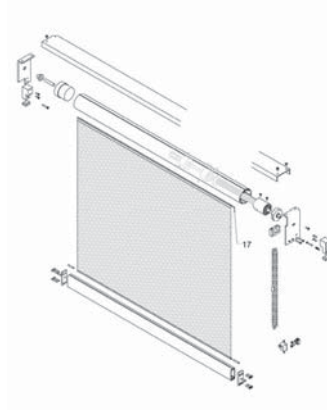


# MORE LONDON 3

London, UK  
2006

Project  
Foster&Partners

Blinds type  
Manual roller blinds





# DISTILLERIA NARDINI

Bassano del Grappa, Italy  
2006

Project  
Massimiliano Fuksas  
Blinds type  
Motorized roller blinds



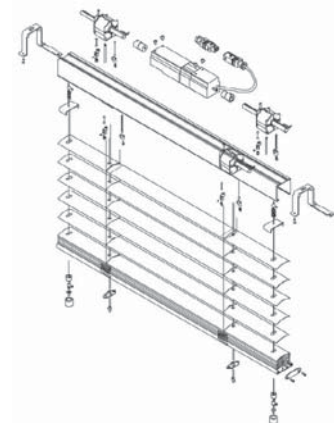
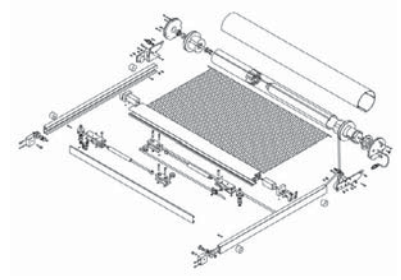


# EIRCOM BUILDING

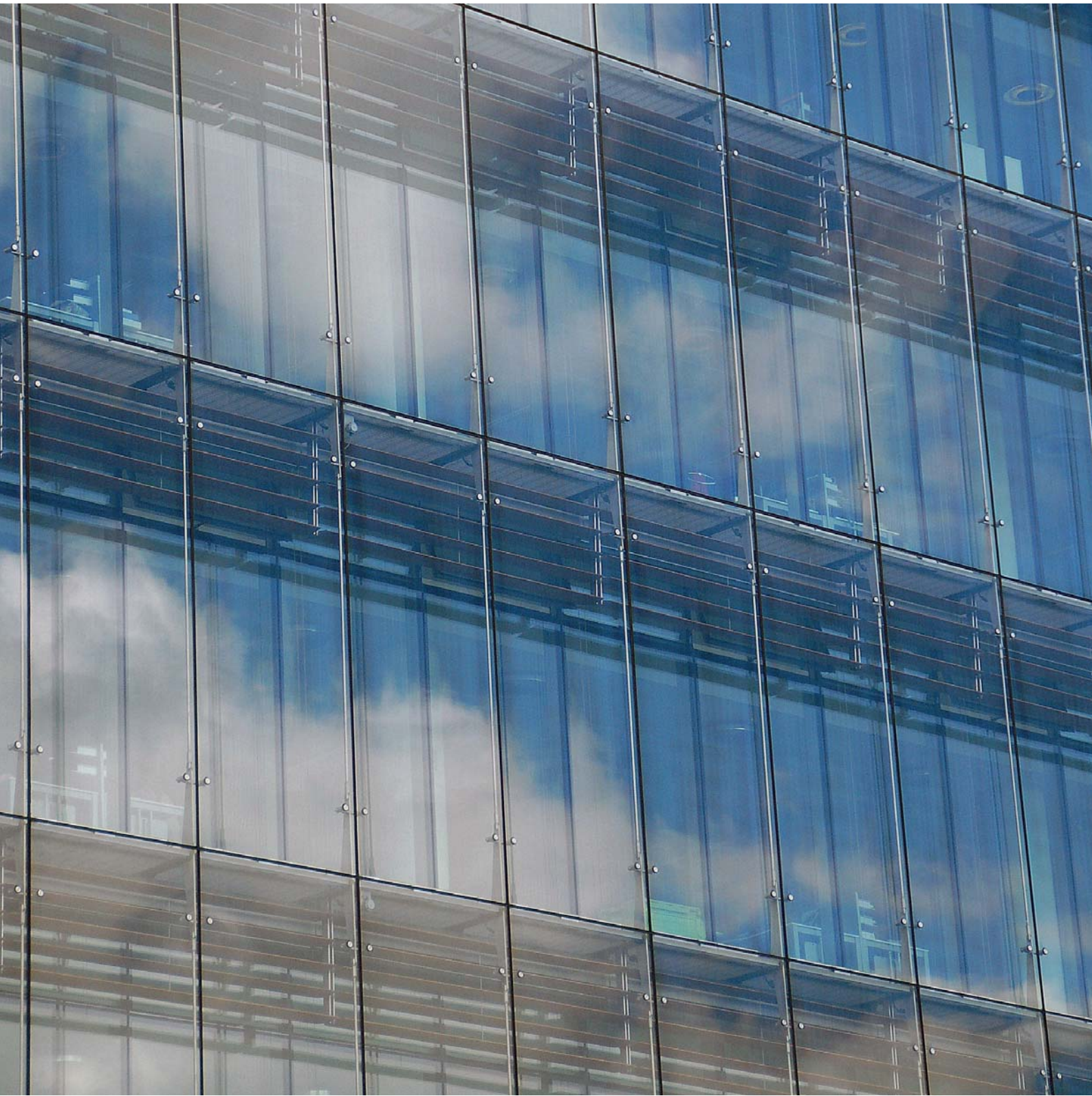
Dublin, Eire  
2008

Project  
Anthony Reddy Associates

Blinds type  
Motorized venetian and roller blinds



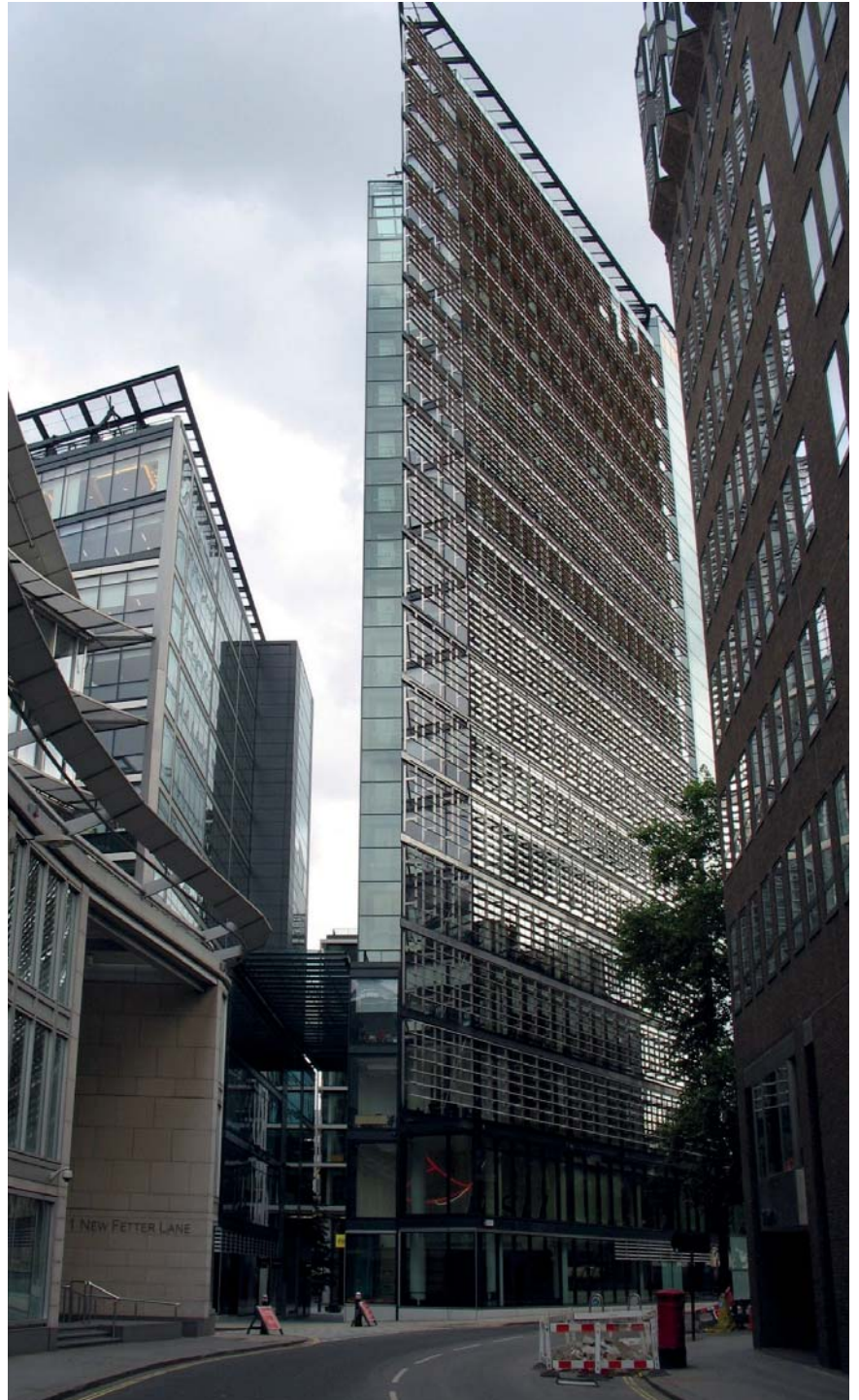




# NEW STREET SQUARE

London, UK  
2008

**Project**  
Bennets Associates  
**Blinds type**  
Frame-mounted wood slats



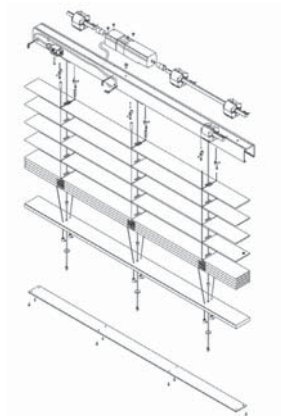


# GOLDMAN SACHS

New York, USA  
2009

**Project**  
Pei Cobb Freed&Partners

**Blinds type**  
Wood venetian blinds

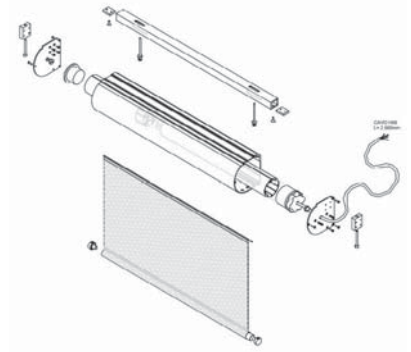
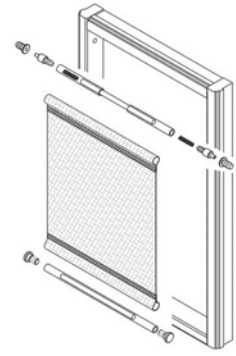




# PRESIDENTIAL PALACE

Tblisi, Georgia  
2009

**Project**  
Arch. Michele De Lucchi  
**Blinds type**  
Motorized roller blinds + Vetrasse



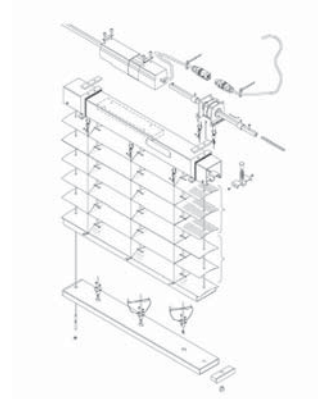


# HOTEL KAMEHA

Bonn, Germany  
2009

**Project**  
Karl-Heinz Schommer

**Blinds type**  
Venetian blinds



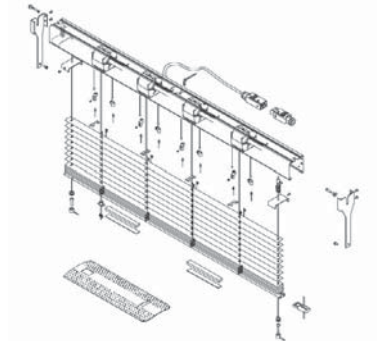


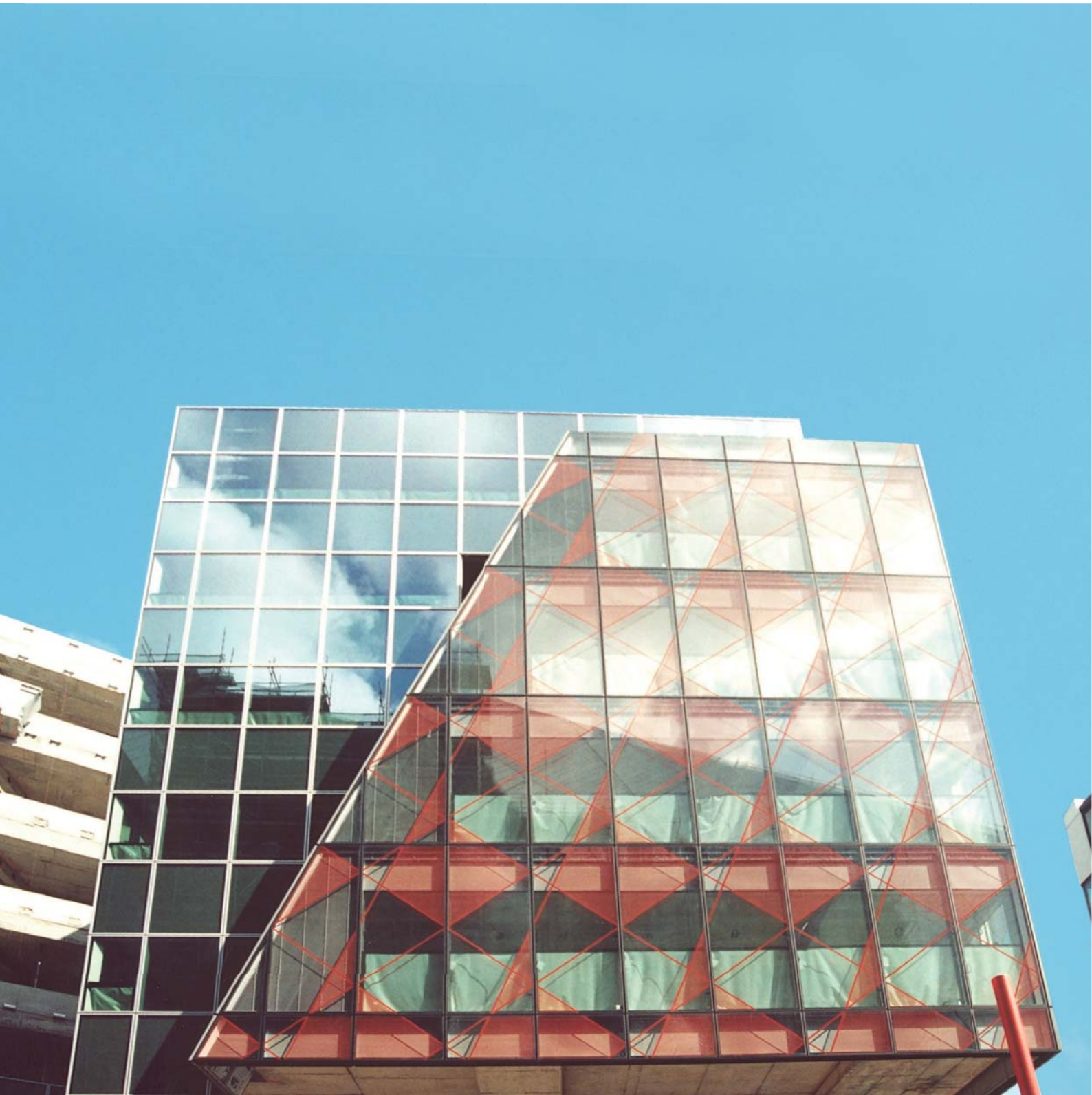


# GRAND CANAL SQUARE

Dublin, Eire  
2010

Project  
Martha Schwartz  
Blinds type  
Motorized venetian blinds



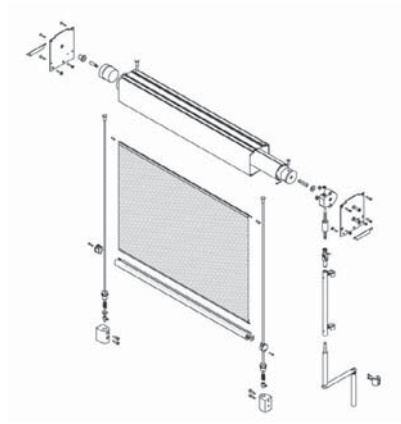


# BAKU PORT TOWER

Baku, Arzebaijan  
20011

Project  
Chapman TaylorArchitects

Blinds type  
Manual roller blinds





# BAYREUTH UNIVERSITY

Bayreuth, Germany

2012

**Project**

Grabow+Hofmann Architektenpartnerschaft Bda

**Blinds type**

Venetian blinds inside the double glazing



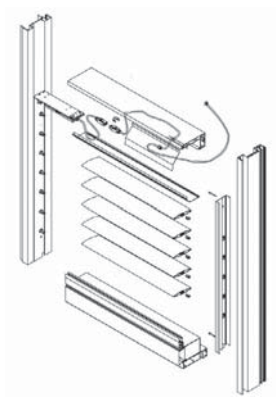
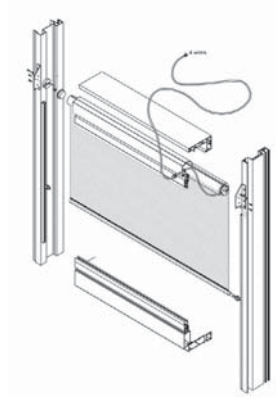


# AL JALILA HOSPITAL

Dubai, United Arab Emirates  
2012

Project  
Studio Altieri

Blinds type  
Louvres with orientable slats + roller blinds







# CITY LIFE MILANO

Milan, Italy  
2012

Project  
Zaha Hadid Architects  
Blinds type  
Aluminum roller shutters



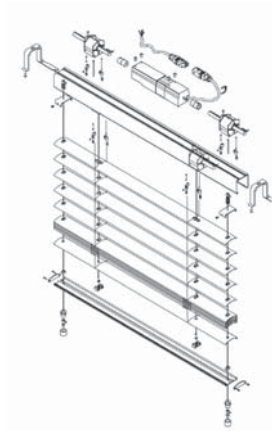


# MAISON DE LA PAIX

Genève, Switzerland  
2013

**Project**  
Ipas Architectes

**Blinds type**  
Motorized venetian blinds





# ILOT B12

Paris, France  
2014

Project  
Foster&Partners + Arte-Charpentiers Architects  
Blinds type  
Venetian blinds





## AUDI NEUBURG

Neuburg an der Donau, Germany  
2014

**Project**

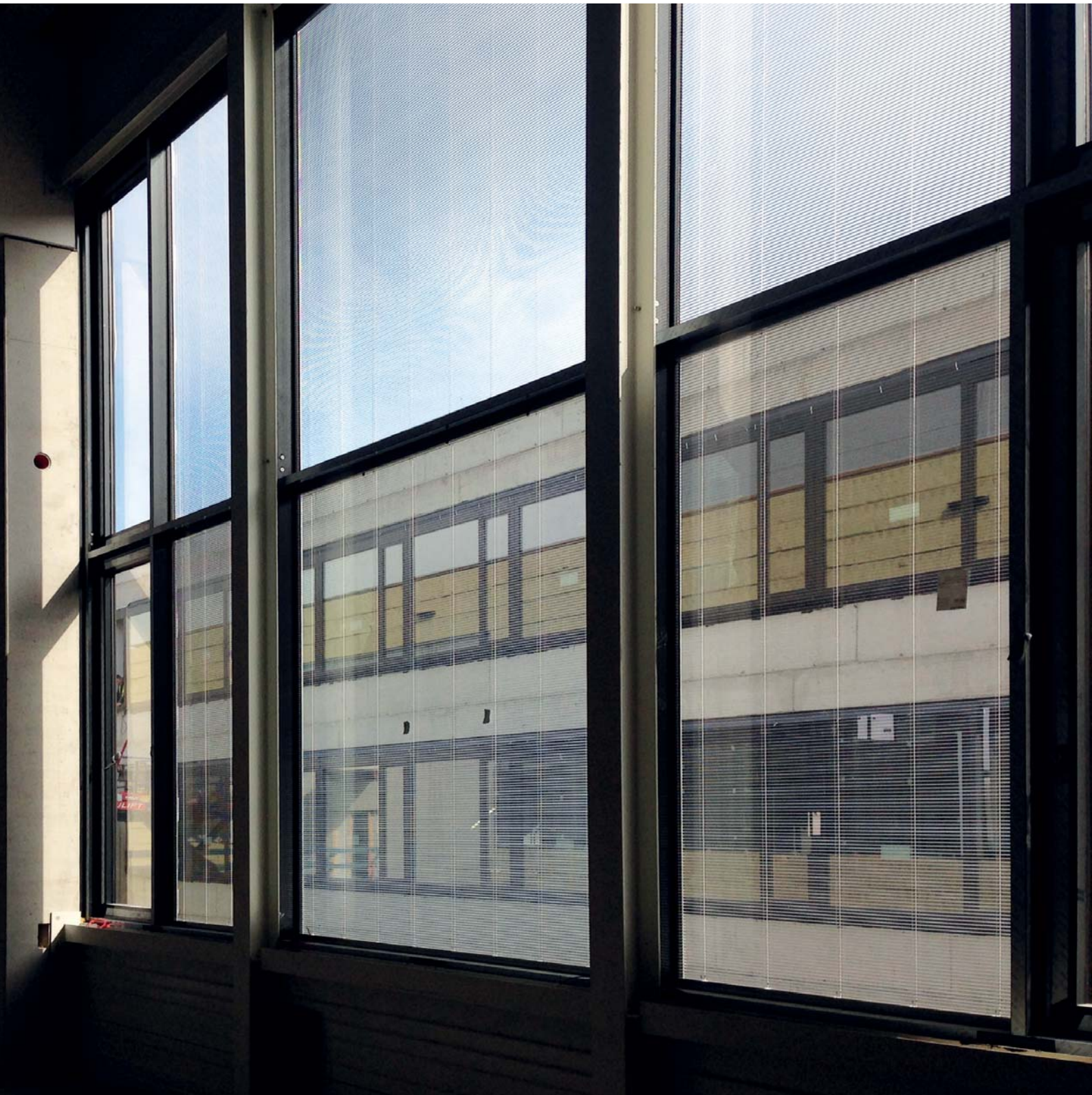
Herle+Herrle Architekten BDA

**Blinds type**

Venetian blinds inside the double glazing







# BALARD CORNE OUEST

Paris, France  
2014-2015

Project  
Wilmotte&Associés  
Blinds type  
Roller blinds



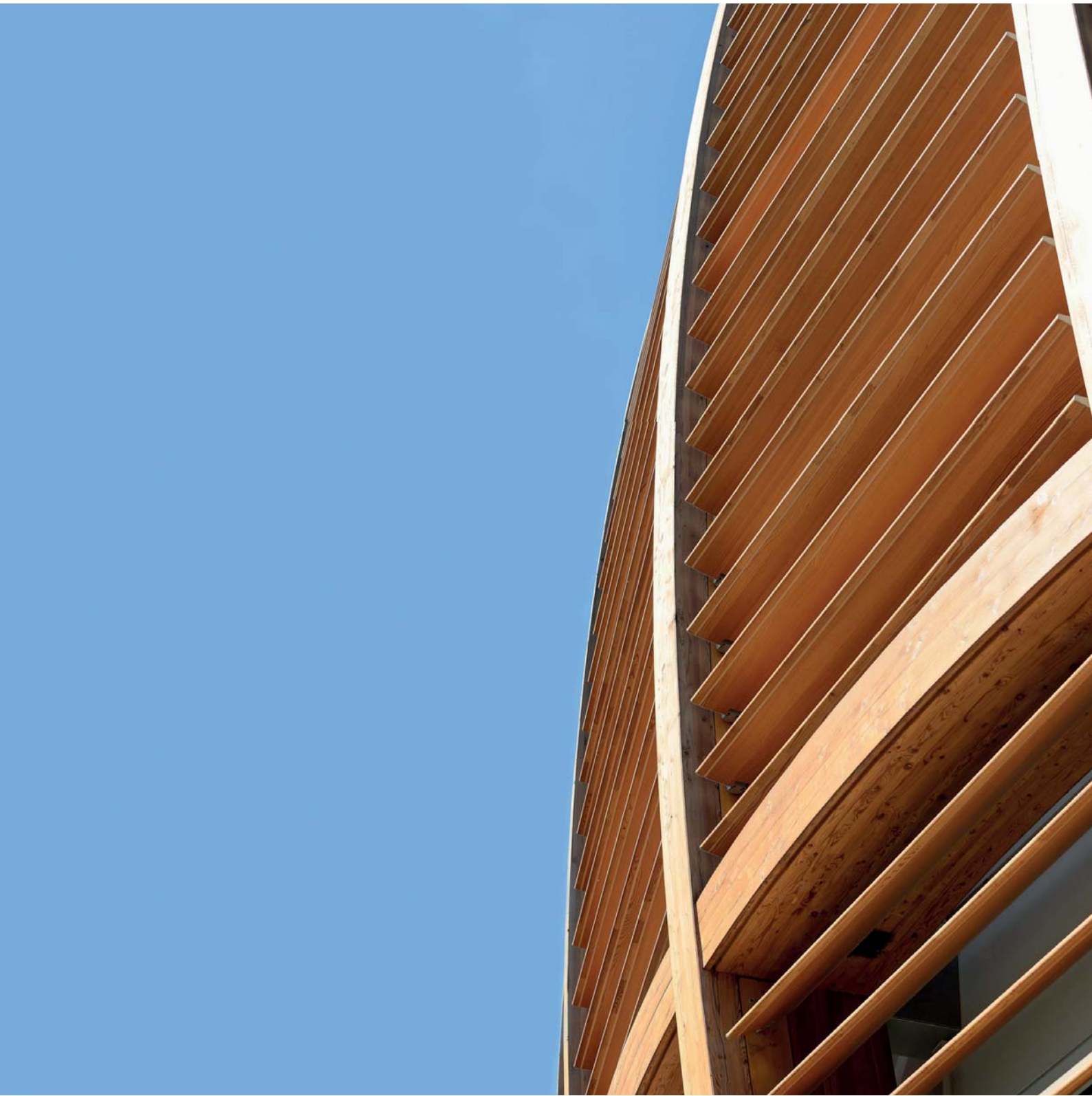


# UNICREDIT E3W

Milano, Italy  
2015

Project  
Studio De Lucchi  
Blinds type  
Wood-Aluminum Louver

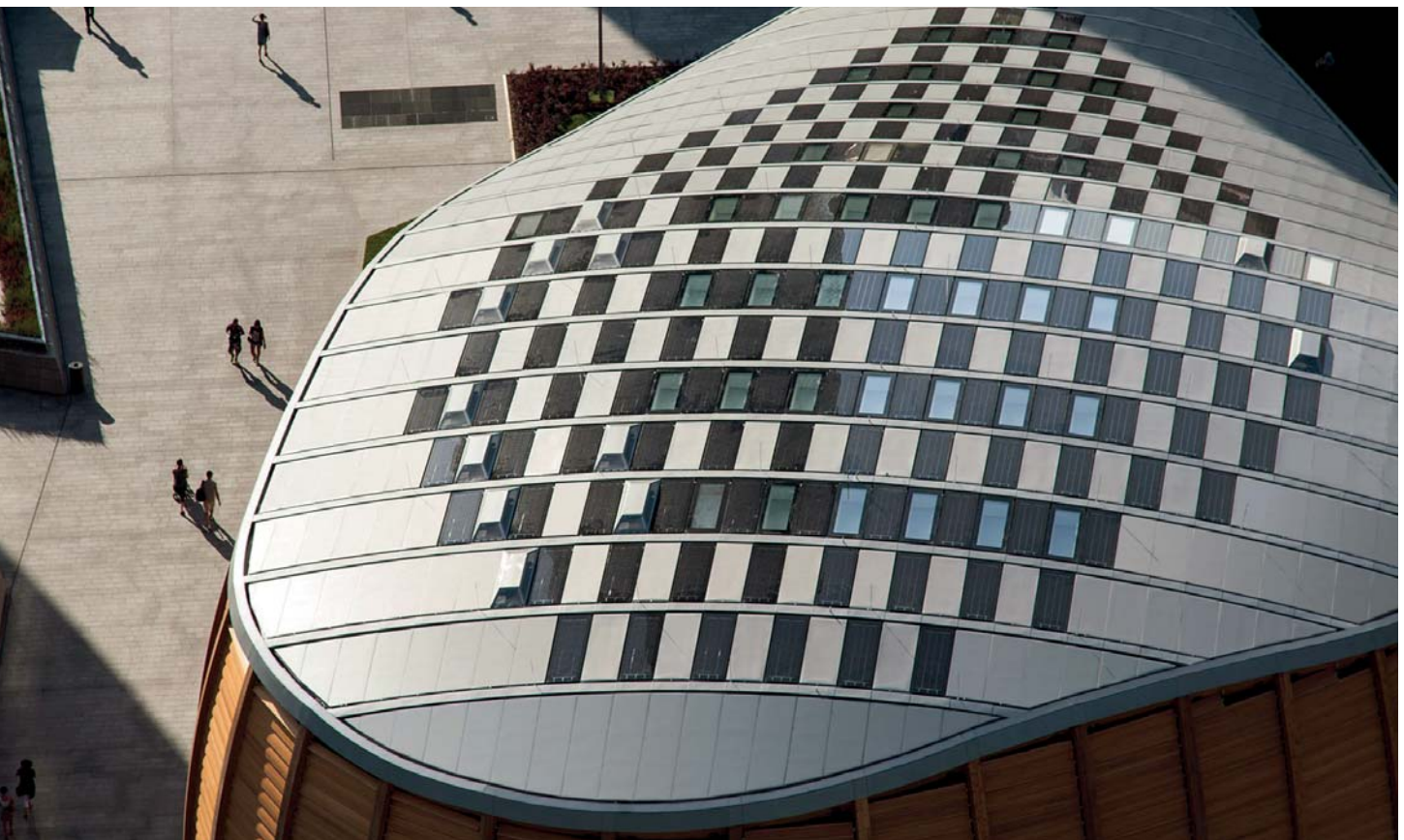
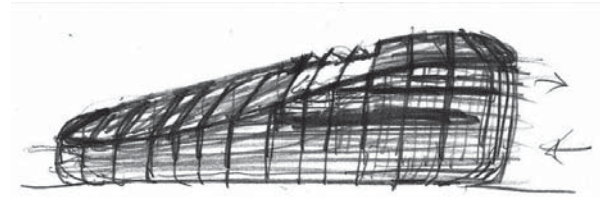




# UNICREDIT E3W

Milano, Italy  
2015

Project  
Studio De Lucchi  
Performed intervention  
Photovoltaic Roof





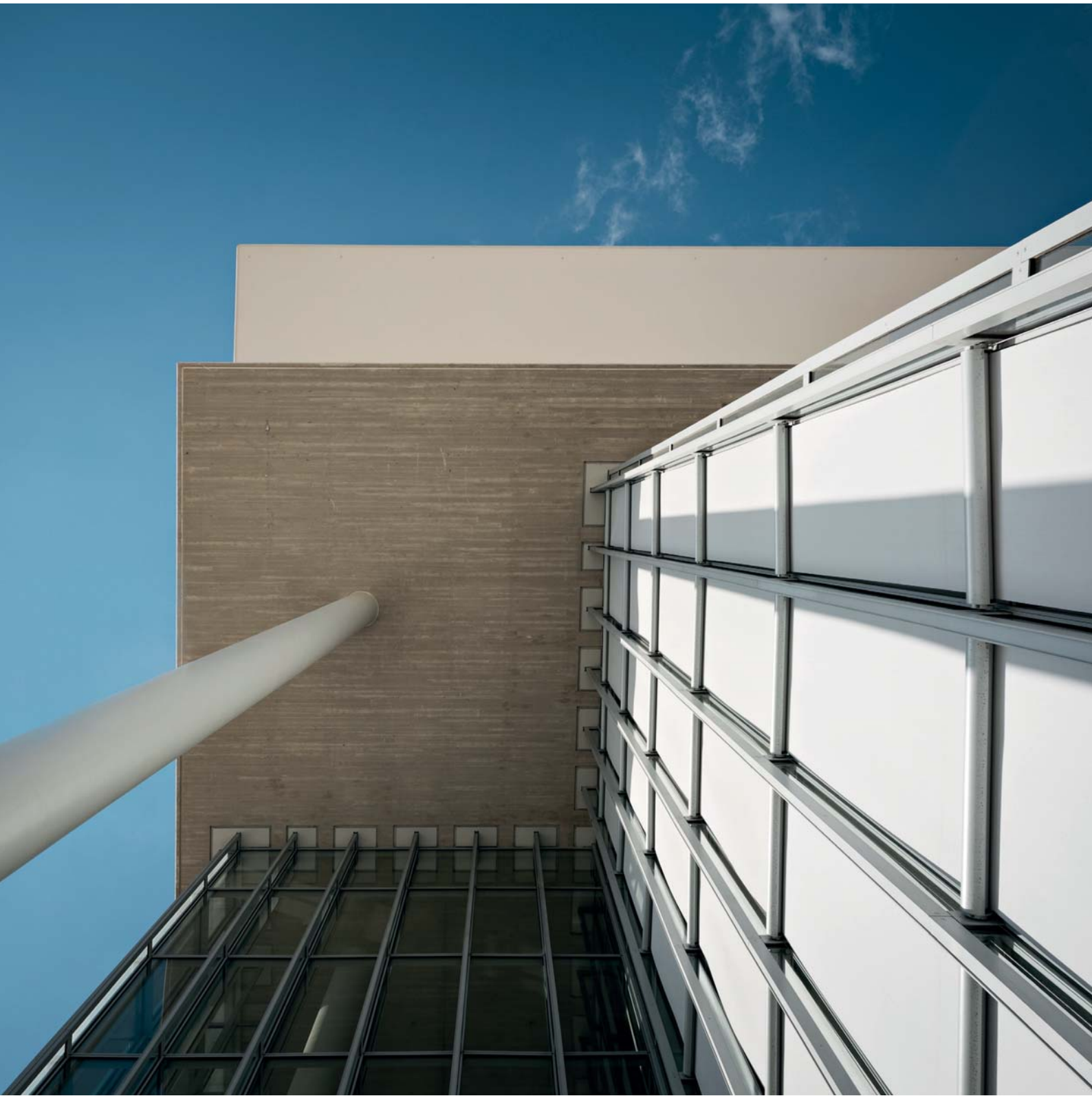
# S.N.F.C.C.

Athens, Grece  
2016

**Project**  
Renzo Piano Building Workshop  
**Blinds type**  
Roller blinds





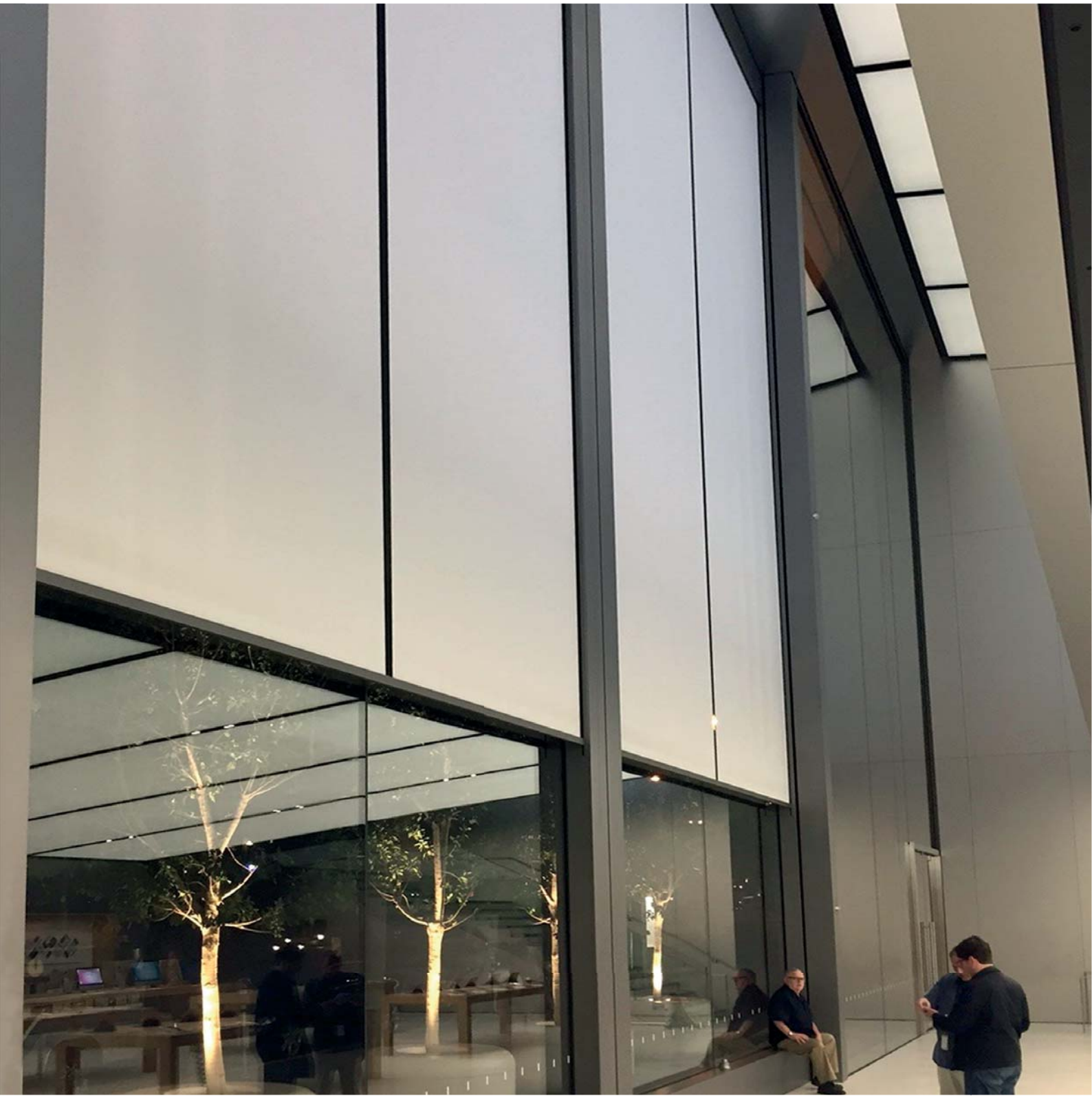


# APPLE STORE

San Francisco, USA  
2016

Project  
Foster&Partners  
Blinds type  
Roller blinds





# APPLE CAMPUS 2

Cupertino, California, USA  
2017

Project  
Foster&Partners

Blinds type  
Wooden venetian blinds





# PRINCIPAL PLACE

London, UK  
2017

Project  
Foster&Partners  
Blinds type  
Internal roller blinds

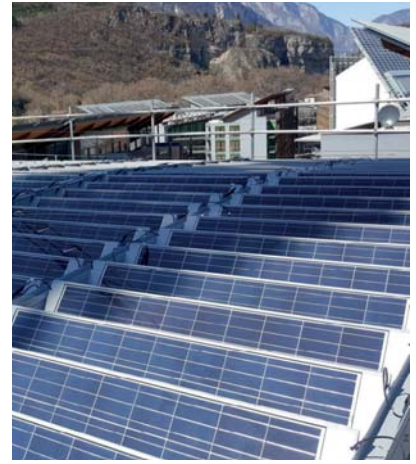




## PHOTOVOLTAIC

Roof and louvres

Performed intervention  
Photovoltaic System





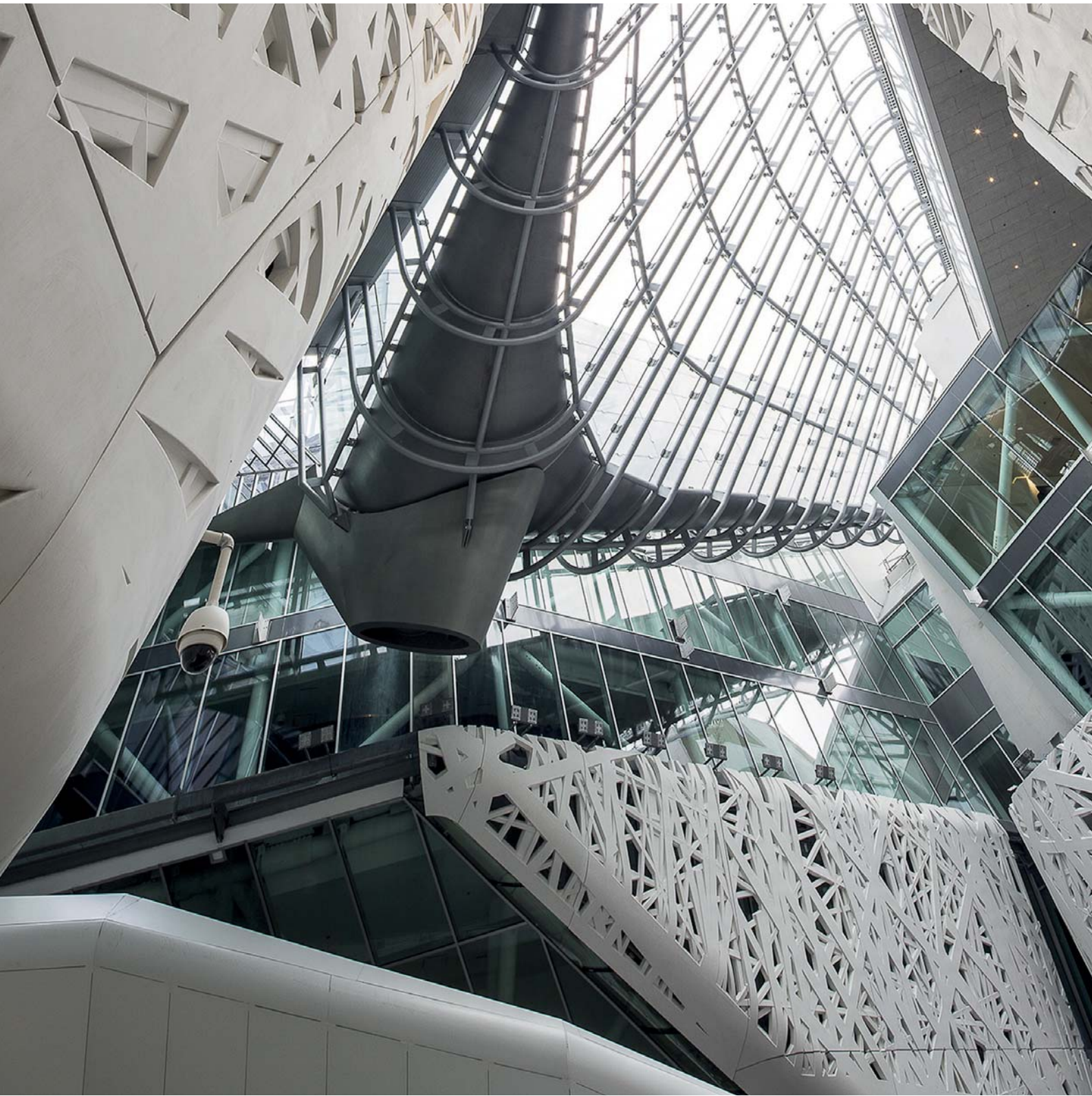


# PALAZZO ITALIA

Milano, Italy  
2017

Project  
Nemesi and Partners  
Blinds type  
Motorized roller blinds





# 52 LIME STREET

London, UK  
2018

Project  
Kohn Pedersen Fox  
Blinds type  
Roller blinds

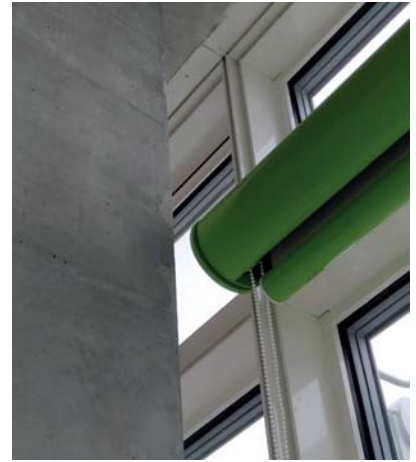




# IMMOFINANZ FLOAT

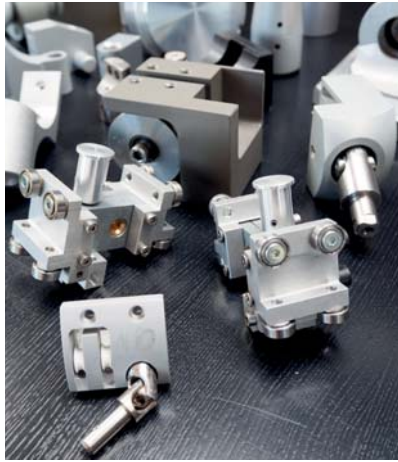
Dusseldorf, Germany  
2018

Project  
Renzo Piano Building Workshop  
Blinds type  
Motorized roller blinds





## SPECIAL COMPONENTS

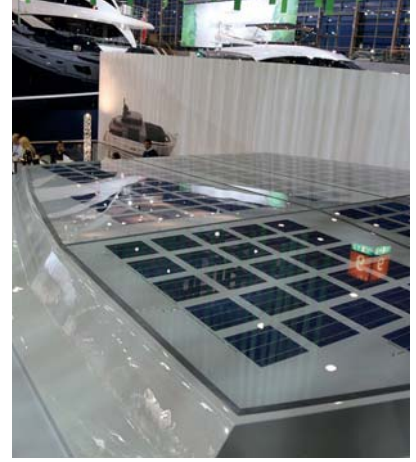


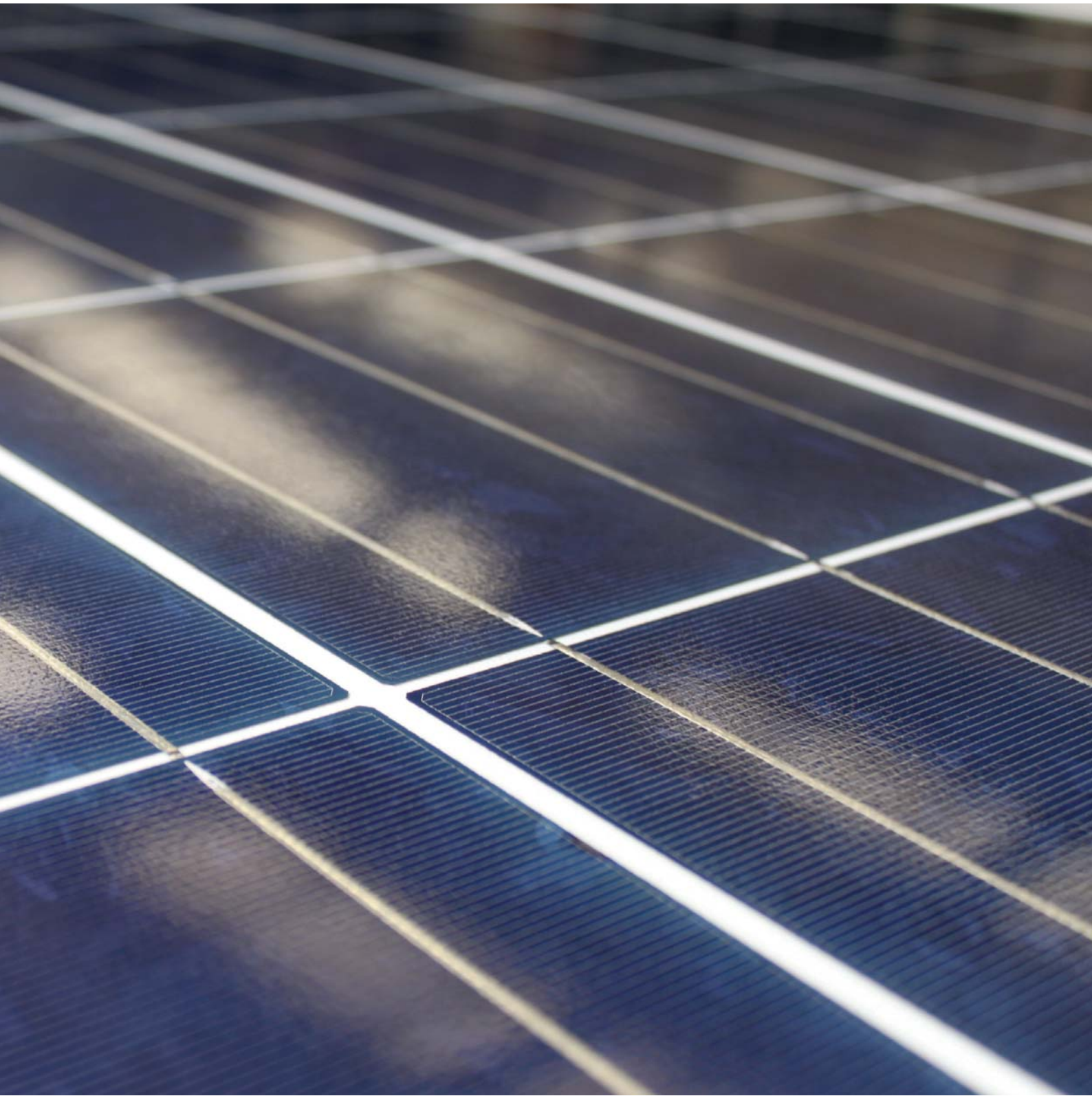


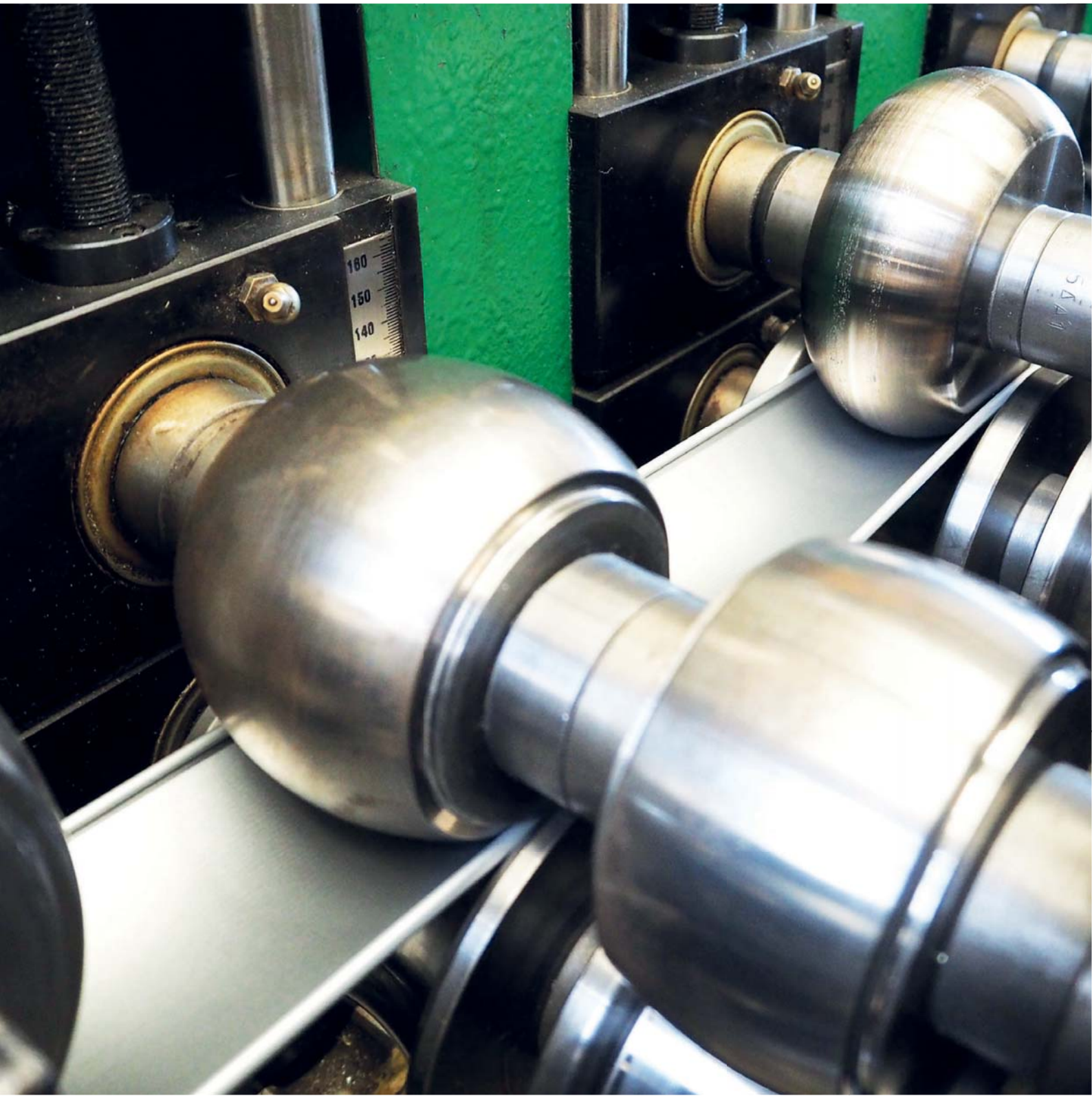


# PHOTOVOLTAIC

Boats









# abba

**ABBA s.r.l.**

Via dell'artigianato 4  
31052 Maserada Sul Piave  
Treviso (TV), Italy  
[www.abbablind.com](http://www.abbablind.com)

**Contatti**

mail: [info@abbablind.com](mailto:info@abbablind.com)  
tel: +39 0422 877044  
fax: +39 0422 877338

**Certificazioni**

UNI EN ISO 9001  
BS OHSAS 18002  
ISO 14002



Imprint

Abba S.r.l.  
References Catalogue - January 2018  
© 2018 Abba S.r.l., all rights reserved.



